

21ST CENTURY SCHOOLS

Primary school places to serve Cathays and parts of Gabalfa, Heath, Llandaff North and Plasnewydd

CONSULTATION DOCUMENT 2023

CONSULTATION PERIOD:
3 MAY 2023 – 30 JUNE 2023



This document can be made available in Braille.
A summary version of this document is available at:
www.cardiff.gov.uk/CathaysGabalfaPrimarySchools
Information can also be made available in other community languages if needed.
Please contact us on 029 2087 2720 to arrange this.



Table of Contents

Introduction

What is this booklet about?

What are we proposing to do?

Option Summary Table

Consultation

Views of children on the proposed changes

How can you find out more and let us know your views?

Your views are important to us

Explanation of terms used in this document

Why are we proposing these changes?

Cardiff's 'Stronger, Fairer, Greener' commitments to learners

How are City-side population changes affecting schools?

Cardiff's Welsh in Education Strategic Plan (WESP)

Providing sufficient English-medium and Welsh-medium places

Schools serving the area at present

English-medium

Welsh-medium

Other provision

How many primary school places are needed?

English-medium primary school places

The number of places in local English-medium primary schools

The total number of children attending English-medium primary schools in the area

Where do these children live?

Future demand for English-medium community primary school places

Welsh-medium primary school places

The number of places in local Welsh-medium primary schools

The total number of children attending Welsh-medium primary schools in the area

Where do these children live?

Future demand for Welsh-medium community primary school places

Welsh-medium provision – targeted growth

School Admissions data – April 2023

Area map

School Sites

Allensbank Primary School site

Gladstone Primary School/ St Monica's Church in Wales Primary School site

Ysgol Mynydd Bychan site

Current Quality and Standards

Allensbank Primary School

Table of Contents

Gladstone Primary School

St Monica's Church in Wales Primary School

Ysgol Mynydd Bychan

Proposed changes to English-medium and Welsh-medium school places

Option 1

Option 2

Option 3

Information relevant to all options

Diversity of school communities

How would pupil mobility be affected?

How would pupils receiving Free School Meals be affected?

How would pupils with English as an Additional Language be affected?

How would Minority Ethnic pupils be affected?

How would support for pupils with Additional Learning Needs be affected?

Governance Arrangements

Dissolution of Governing Bodies and establishment of a new Governing Body

Federation

Collaboration

How would standards in schools be affected by the changes?

Standards

Teaching and learning experiences

Care, support and guidance

Leadership and Management

How would secondary school provision be affected?

How would changes affect other schools?

Alternatives considered

Admission Arrangements

Learner Travel Arrangements

Funding of proposed changes

Capital funding

Revenue funding

Impact of the proposals on the Welsh Language

Equalities

Community Impact

Potential Disruption to Pupils

Next steps, how to make your views known and feedback form

Key Dates

Consultation period

Statutory Notice

Determination of proposals

Decision notification

Your views are important to us



Introduction

What is this booklet about?

This booklet is for parents/carers, school staff, school governors and anyone who has an interest in education in Cardiff.

It sets out details of proposed changes to primary school provision serving Cathays and parts of Gabalfa, Heath, Llandaff North and Plasnewydd.

It will be of particular interest to parents/ carers of children attending, or expecting to attend, Allensbank Primary School, Gladstone Primary School, St Monica's Church in Wales (CiW) Primary School or Ysgol Mynydd Bychan.

We want everyone to understand what is being proposed, so you can tell us what you think about the changes.

What are we proposing to do?

The Council is seeking the views of the community on proposals to:

- make changes to how English-medium community primary schools are organised, retaining an equivalent number of places or a marginal reduction in places compared to the existing arrangements, and
- expand Welsh-medium primary school provision at Ysgol Mynydd Bychan

These changes are proposed to:

- support each school to continue to improve education for all of their learners
- ensure that each school provision offered meets the diverse needs of the local community
- support schools to be financially sustainable, with stable school budgets
- support schools to allocate a greater proportion of budget to teaching and learning, thereby retaining and increasing opportunities for learners
- increase Welsh-medium primary school places by one Form of Entry (210 primary age pupils)
- consolidate English-medium primary school places with an appropriate level of surplus.

The Council has identified three options to reorganise school provision in the area. Table 1 on page 6 & 7 summarises the changes proposed. The proposed changes would take effect from September 2025.

Further information on how these changes would be implemented, and what they would mean for each school, can be seen at pages 39 - 63.

What are we proposing to do?

The Council is suggesting three options to reorganise schools in the area.

Table 1 shows the proposed changes. These changes would take effect from September 2025.

| Option | Schools | Proposal |
|----------|--|--|
| Option 1 | Allensbank Primary School and Gladstone Primary School | <ul style="list-style-type: none"> o Amalgamate Allensbank and Gladstone Primary Schools, by o Formally closing Allensbank Primary School o Formally closing Gladstone Primary School o Establishing a new 420 place English-medium Primary School with nursery on the current shared Gladstone Primary School / St Monica's CiW Primary School site |
| | St Monica's CiW Primary School | <ul style="list-style-type: none"> o Transfer St Monica's CiW Primary School to the current Ysgol Mynydd Bychan site o Establish nursery provision at the school |
| | Ysgol Mynydd Bychan | <ul style="list-style-type: none"> o Transfer Ysgol Mynydd Bychan to the current Allensbank Primary School site o Increase the capacity of Ysgol Mynydd Bychan from 192 places to 420 places o Increase the number of nursery places at Ysgol Mynydd Bychan from 64 to 96 |

| Option | Schools | Proposal |
|----------|--|--|
| Option 2 | Allensbank Primary School and Gladstone Primary School | <ul style="list-style-type: none"> o Co-locate Allensbank and Gladstone Primary Schools on a shared site, by: o Transferring Allensbank Primary School to the current shared Gladstone Primary School / St Monica's CiW Primary School site o Reducing the capacity of Allensbank Primary School from 315 places to 210 places o Reducing the age range of Allensbank Primary School from 3-11 to 4-11 by discontinuing nursery provision at the school o Increasing the number of nursery places at Gladstone Primary School from 64 to 96 |
| | St Monica's CiW Primary School | <ul style="list-style-type: none"> o Transfer St Monica's CiW Primary School to the current Ysgol Mynydd Bychan site o Establish nursery provision at the school |
| | Ysgol Mynydd Bychan | <ul style="list-style-type: none"> o Transfer Ysgol Mynydd Bychan to the current Allensbank Primary School site o Increase the capacity of Ysgol Mynydd Bychan from 192 places to 420 places o Increase the number of nursery places at Ysgol Mynydd Bychan from 64 to 96 |

What are we proposing to do?

| Option | Schools | Proposal |
|----------|---------------------------|--|
| Option 3 | Allensbank Primary School | Transfer Allensbank Primary School to the current Ysgol Mynydd Bychan site Reduce the capacity of Allensbank Primary School from 315 places to 192 places |
| | Ysgol Mynydd Bychan | Transfer Ysgol Mynydd Bychan to the current Allensbank Primary School site Increase the capacity of Ysgol Mynydd Bychan from 192 places to 420 places Increase the number of nursery places at Ysgol Mynydd Bychan from 64 to 96 |

Options 2 and 3 would allow for consideration to be given to collaboration or formal federation between Allensbank Primary School and Gladstone Primary School.

Schools that collaborate, or federate under a single Governing Body, work together on sharing priorities and expertise. This supports separate schools to make better use of resources, and to explore ways of doing things more effectively.

Should the schools consider implementing a formal collaboration or federation this would be led by the Governing Bodies of Allensbank Primary School and Gladstone Primary School and would be supported by the Council. Any proposal to federate would be subject to a separate consultation by these Governing Bodies.



Consultation

The consultation process must follow the Welsh Government guidelines as set out in the School Organisation Code 2018.

Cardiff Council is consulting on the proposed changes to Allensbank Primary School, Gladstone Primary School and Ysgol Mynydd Bychan.

The Council is also supporting the Governing Body of St Monica's Church in Wales (CiW) Primary School in its consultation on potential changes to the school.

As part of the consultation, we are asking people what they think about the changes we are proposing. There are a number of ways for people to tell us their views.

Table 2 below sets out who the Council is consulting:

| Table 2: Groups the Council is consulting with | |
|--|---|
| Children and young people | Welsh Ministers |
| Parents/carers | Police & Crime Commissioner |
| School staff | Central South Consortium Joint Education Service (CSCJES) |
| School Governing Bodies | Welsh Language Commissioner |
| Local residents | Rhieni dros Addysg Gymraeg (RhAG) |
| Local Members/Assembly Members (AMs)/ Regional Assembly Members/Member of Parliament (MPs) | Trade Unions |
| Diocesan Directors of Education | Childcare providers |
| Neighbouring Authorities | Mudiad Meithrin |
| All Cardiff schools | Wales Pre-School Providers Association |
| Estyn | Clybiau Plant Cymru Kids Club |
| Communities First Partnership | National Day Nurseries Association |
| Community Council's | Future Generations Commissioner |
| Children's Commissioner | Cardiff and Vale University Health Board |
| Voluntary Sector organisations | Cardiff and Vale College |
| St David's College | Welsh Education Forum (WEF) |

Views of children on the proposed changes

Cardiff is committed to being a Child-friendly city where children are able to inform decisions that affect their lives and the services they access. It is important that when bringing forward proposals, suitable arrangements are made to consult with pupils. The Council will consult with pupils in the local schools in an age-appropriate way, and the information gathered in these sessions will be included in the final consultation report considered by the Council.

The Governing Body of St Monica's Church in Wales Primary School will also consider the views of its pupils in its consultation report.

How can you find out more and let us know your views?

This consultation document is available on the Cardiff Council website at www.cardiff.gov.uk/CathaysGabalfaPrimarySchools

If you are unable to access the document on-line, printed copies of this consultation document will be available by post on request. You may request a copy by e-mailing schoolresponses@cardiff.gov.uk or by telephoning **029 2087 2720**.

- We will also advise families with children at Allensbank Primary School, Gladstone Primary School, St Monica's CiW Primary School and Ysgol Mynydd Bychan, and those with children of pre-school age in the local area, how they can access a copy of the document.
- We will hold public meetings and drop-in sessions for anybody to attend where the changes we are proposing will be explained. You will have an opportunity to ask questions as part of these sessions. If you would like to attend a drop-in session / on-line public meeting please contact us via e-mail to schoolresponses@cardiff.gov.uk confirming which meeting you would like to attend and we will provide a link and instructions on how you can access the meeting.
- Council officers will meet with the Governing Bodies and staff of the schools directly affected.
- You can also write to the Council to tell us what you think.

The dates of the consultation meetings are set out below:

| Nature of Consultation | Date/Time | Venue |
|--|---|-------------------------------------|
| Drop-in session | Monday 15 May 2023 2:30pm – 4:30pm | Cathays Branch and Heritage Library |
| Drop-in session | Thursday 25 May 2023 9am – 11am | Cathays Branch and Heritage Library |
| Drop-in session | Wednesday 07 June 2023 5pm – 7pm | Cathays Branch and Heritage Library |
| On-line drop-in session | Tuesday 09 May 2023 9:30am – 12 noon | Microsoft Teams |
| On-line drop-in session | Wednesday 17 May 2023 9:30am – 12 noon | Microsoft Teams |
| On-line drop-in session | Monday 05 June 2023 1.30pm – 4pm | Microsoft Teams |
| On-line drop-in session | Thursday 08 June 2023 1:30pm – 4pm | Microsoft Teams |
| Public meeting (through the medium of English) | Thursday 18 May 2023 6:15pm – 7:40pm | Cathays Community Centre |
| Public meeting (through the medium of Welsh) | Thursday 25 May 2023 6:15pm – 7:40pm | Cathays Community Centre |
| On-line public meeting | Thursday 08 June 2023 6pm – 7:30pm | Microsoft Teams |

Your views are important to us

Your views matter and we want you to tell us what you think about the changes we have suggested in this document.

You can do this by:

- attending a public meeting or drop-in session. If you would like to attend an online drop-in session/online public meeting, please contact us via e-mail to schoolresponses@cardiff.gov.uk confirming which session you would like to attend, and we will provide a link and instructions on how you can access the meeting.
- completing the electronic response form which you can find at: www.cardiff.gov.uk/CathaysGabalfaPrimarySchools
- printing and completing the consultation response form, which you can find at www.cardiff.gov.uk/CathaysGabalfaPrimarySchools and returning the form by post to Room 401, County Hall, Cardiff, CF10 4UW
- writing to the School Organisation Planning team by e-mail to schoolresponses@cardiff.gov.uk or by post to Room 401, County Hall, Cardiff, CF10 4UW. This can include requesting an officer call back if you have a specific question that you feel you would like further information about.

Please note that all comments sent in writing or by e-mail must contain the full name and postal address of the person making the comments.

The closing date for responses to this consultation is Friday 30 June 2023.

Unfortunately, we will not be able consider any consultation responses received after this date.



Explanation of terms used in this document

Admission Number - all maintained schools admit pupils up to at least their Published Admission Number (PAN). The admission number is the number of pupil places available in each year group.

Amalgamation - where two or more existing schools become one school, by closing the existing schools and establishing a new school.

ALN (Additional Learning Needs). This may be due to learning difficulties, physical disabilities, or behavioural problems. (ALN is sometimes referred to as Special Educational Needs).

Capital funding for schools – money used to build new school buildings or improve existing facilities.

Classroom – a room within a school of sufficient size for teaching.

Classbase – a classroom within a school that is used for teaching and is where a group of children are usually based.

Collaboration - where two or more school governing bodies agree to work together on agreed shared priorities and can share expertise and resources.

Community School - a primary or secondary school where the Council arranges school admissions.

Catchment area - an area that a community school would normally serve. In Cardiff, children living within this area have higher priority for admission to the school than children outside of this area.

Federation - a formal and legal agreement by which a number of schools share governance arrangements and have a single governing body.

Form of Entry (FE) - a Form of Entry (FE) refers to a class of 30 children in each year group. A 2FE school is therefore two classes of 30 children in each year group. Schools with Forms of Entry that are not whole numbers ordinarily operate mixed-age classes.

Local Authority - an organisation that is officially responsible for all the public services and facilities in a particular area.

Number on Roll data - the number of pupils at a school (not including nursery pupils).

PLASC (Pupil Level Annual School Census). In January of every year, the Welsh Government collects information from schools. This includes the number of pupils at each school, their age groups, home addresses, ethnicity, and data on Welsh language, Additional Learning Needs, first language and pupils who have Free School Meals.

Surplus places - empty/unfilled places in a school.

Statutory Notice - a statutory notice is the formal publication of a finalised proposal. This will only be undertaken if a decision is made by the Council Cabinet to proceed with a proposal following consideration of all responses from the consultation process. This is a legal requirement as outlined in the School Organisation Code (2018).

Voluntary Aided School - a primary or secondary school that normally has a religious character with church majority governance and where the Governing Body of the school is the admissions authority.

Welsh in Education Strategic Plan (WESP) – A statutory plan that each Council must prepare, stating how it will improve the planning of Welsh-medium education and improve standards in Welsh-medium education, with targets set and agreed by Welsh Ministers.

Why are we proposing these changes?

Background

Cardiff's 'Stronger, Fairer, Greener' commitments to learners

In June 2022, the Council published its 'Stronger, Fairer, Greener' document, setting out the key themes and commitments for the next five years.

The Council believes that good education is the surest route out of poverty and, in turn, that the long-term prosperity of the city relies on firm support for our children and young people to reach their potential.

The Council is committed to supporting Cardiff's most vulnerable learners, including children in care, those educated other than at school and children from the most deprived communities. The Council is developing a Community Focussed Schools programme and is promoting the benefits of bilingualism, expanding uptake in Welsh-medium education in line with the Welsh Government's Cymraeg 2050 strategy.

Ensuring funding for education is targeted towards learning experiences and opportunities alongside support for families is critical. The Council is investing in schools and must also support each school to continue to improve education for all of their learners.

To achieve this, the Council must ensure that there is an appropriate balance in the number and different types of school places serving each area, with a sustainable level of surplus places. Each school provision offered must meet the diverse needs of the communities they serve. The Council must maximise the potential of its teaching and learning staff to ensure best use of their talent, thereby securing the greatest impact on learner opportunities and outcomes for all.

How are City-wide population changes affecting schools?

Intakes to Reception classes in primary schools city-wide peaked at approximately 4,370 pupils in 2015/16 and 2016/17. This corresponds with peak birth rates recorded five years earlier. At the time of the peak intakes, Cardiff retained approximately 8% surplus places.

Since 2017/18, there has been a sustained fall in the birth rate and changes to migration patterns in the city. This means that city-wide intakes to primary education are projected to reduce significantly until at least September 2025. However, changes to populations are not consistent in all parts of the city.

Intakes to Reception classes in 2021/22 fell to approximately 3,860 pupils. Intakes are projected to fall further to approximately 3,500 by 2025/2026, an overall fall of 18% since 2016/17. Comparing projected intakes to the number of places available, Cardiff's surplus places would increase to approximately 25% city-wide. This represents the equivalent of 18 surplus two-form entry primary schools.

As parents are able to state a preference for schools, some schools would continue to have high intakes, and the fall in the population would have little or no impact on those schools. For other schools the impact on pupil numbers will be far greater than the city-wide average of an 18% fall.

Schools receive the majority of their funding based on the number of pupils on roll. Falling intakes and increased surplus places city-wide will greatly impact on some schools' budgets. In turn, this affects the teaching and learning opportunities those schools can offer.

The School Organisation Code provides guidance to Local Authorities on how many surplus places should be retained. The Code states that, where there are more than 10% surplus places in an area overall, local authorities should review their provision. This review should consider whether to make proposals to reduce surplus places if this will improve the effectiveness and efficiency of provision. In Cardiff, a reasonable proportion of surplus primary school places must be retained above the 10% guidance level to respond to the changes to birth rates, and to intakes to schools, over the long term.

The number of primary school places available in existing communities in Cardiff is sufficient to accommodate all pupils, but the level of surplus is projected to increase.

Proposals to better balance capacities of schools with the forecast take up of places would therefore provide a more effective use of the schools' financial resources. This would allow schools to allocate a greater proportion of their budget to teaching and learning.

Cardiff's Welsh in Education Strategic Plan (WESP)

In 2017 the Welsh Government published its 'Cymraeg 2050: A million Welsh speakers' strategy for the promotion and facilitation of the use of the Welsh language. This sets out the long-term approach to achieving a target of a million Welsh speakers by 2050.

Local Authorities are required to publish a Welsh in Education Strategic Plan setting a ten-year target outlining the expected increase in Year 1 children who are taught through the medium of Welsh.

Each local authority must set its target in line with the range provided by the Welsh Government in order to contribute toward the overall national target. The target set for Cardiff by the Welsh Government is to deliver growth so that between 25% and 29% of Year 1 learners are educated through the medium of Welsh by 2031.

In the 2020/2021, the intake to Reception Welsh-medium education was 749 pupils, which was 18% of the total intake. Therefore, to reach the lower range target there would need to be a percentage increase of approximately 7%. To reach the upper range target there would need to be a percentage increase of approximately 11%.

At present, 18% of Reception age primary school places available are also through the medium of Welsh, either in Welsh-medium or dual stream schools. As intakes to schools are projected to reduce, the Council would be able to accommodate a greater percentage of children in Welsh-medium schools. The number of places available in Welsh-medium schools would still need to increase for Cardiff to meet its targets.

Cardiff's Welsh in Education Strategic Plan (WESP) sets out a series of ambitious commitments to build on the progress achieved to date. These will ensure that:

- every child in the city can receive an education in the language of Welsh, if this is their preference
- the number receiving their education in Welsh-medium schools will increase, and
- all children in English-medium schools will have the opportunity to become confident in speaking Welsh.

Providing sufficient English-medium and Welsh-medium school places

The Council is committed to ensuring that every child in Cardiff receives a great education through their chosen language medium.

The Council consulted in 2021 on proposals to provide an appropriate balance of Welsh-medium and English-medium primary school places to serve Cathays and parts of Gabalfa, Heath, Llandaff North and Plasnewydd.

The Council also sought views on long term changes to school provision to provide an appropriate balance of Welsh-medium and English-medium school places to serve the area with any solution seeking to:

- Reduce English-medium surplus places to serve the combined catchment areas of Allensbank, Albany and Gladstone
- Expand Welsh-medium provision serving the existing catchment area of Ysgol Mynydd Bychan to 2 Forms of entry
- Provide greater certainty and stability of leadership, management, teaching and support staff, to support continued focus on teaching standards and improved outcomes for pupils
- Enable investment in school buildings to improve the learning environment.

The outcome of the consultation showed that there was support overall for the expansion of Welsh-medium education. However, the majority of respondents including the Headteachers and Governing Bodies of Allensbank Primary School and Ysgol Mynydd Bychan did not support the interim expansion of Ysgol Mynydd Bychan as proposed.

The proposals outlined in this consultation document address the issues that informed the earlier proposals and take account of the issues raised during the earlier consultation.

There is sufficient capacity within existing schools serving these areas to support the reorganisation of existing provision.

The proposals retain each of the school sites, and therefore retain flexibility in the Education estate to respond to any future population changes affecting the area.

The options presented support a more effective and efficient use of resources.

The proposals also aim to increase school effectiveness and narrow inequalities in achievement between advantaged and disadvantaged areas, groups, and individuals.

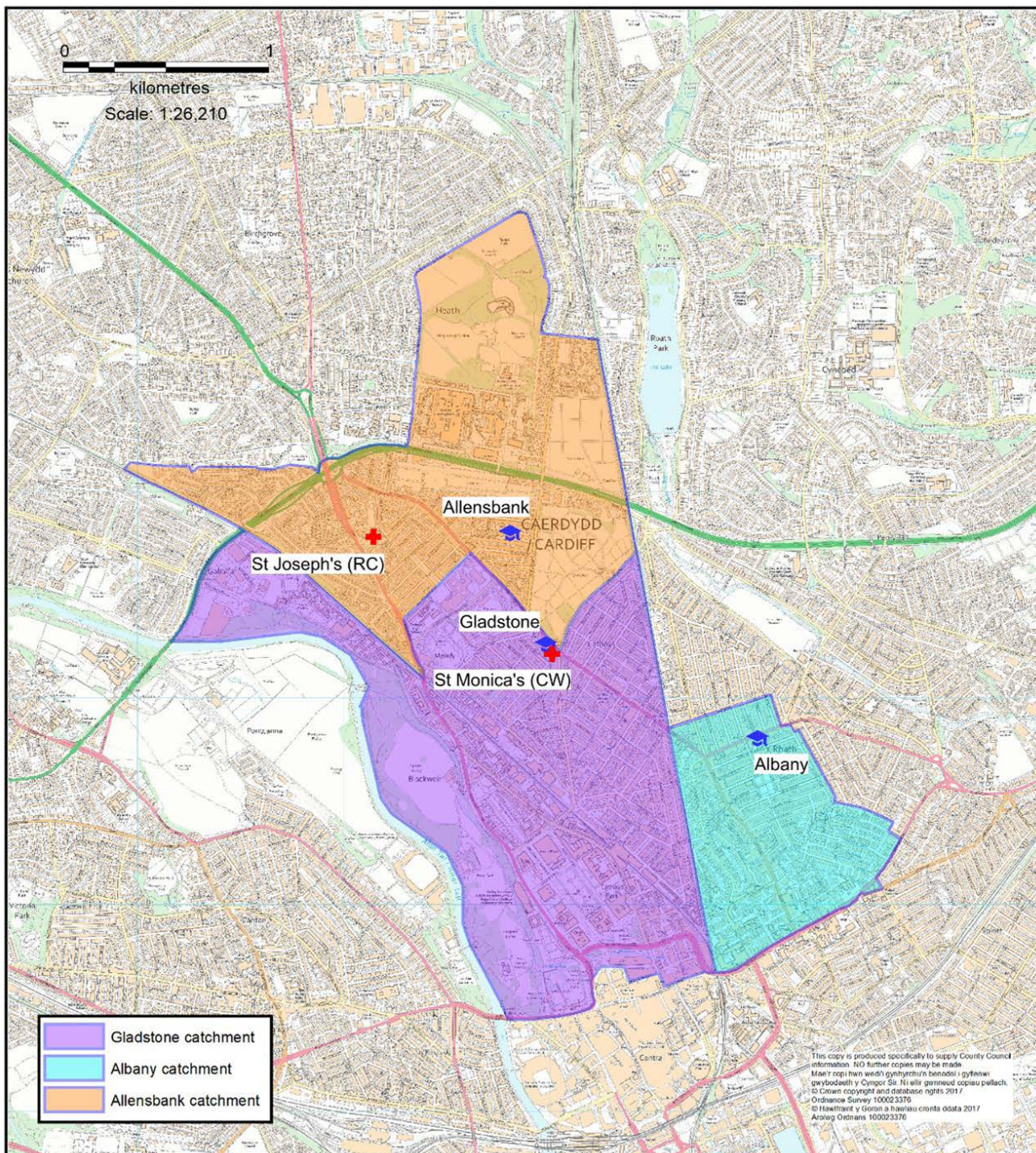
Schools serving the area at present

The Cathays, Gabalfa, Heath, Llandaff North and Plasnewydd areas are served by a number of English-medium and Welsh-medium primary schools.

English-medium

When taken together, the combined catchment areas of Allensbank Primary School, Albany Primary School and Gladstone Primary School, form the secondary school catchment of Cathays High School. This catchment serves Cathays and parts of Gabalfa, Heath, Llandaff North and Plasnewydd.

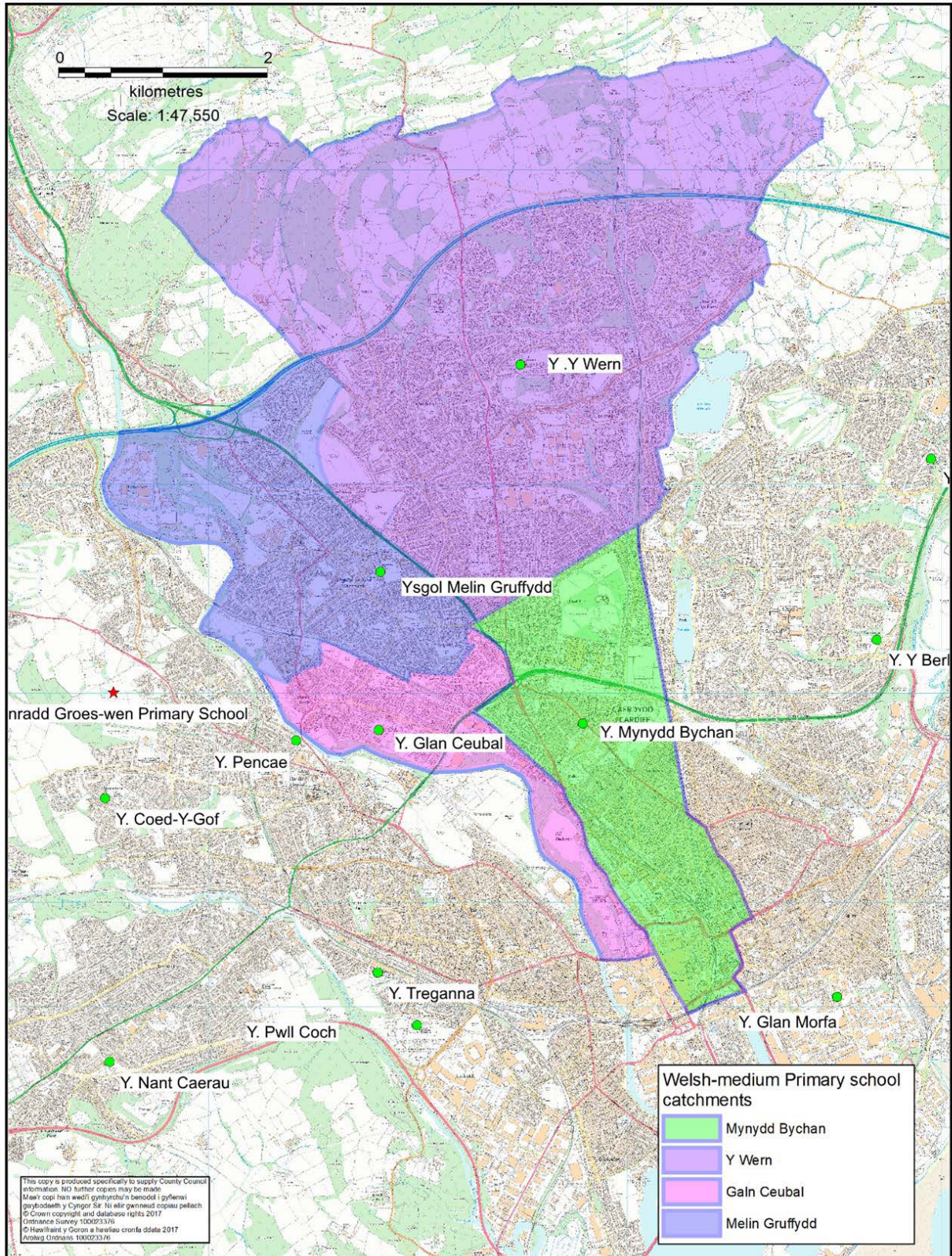
St Monica's Church in Wales (CiW) Primary School, St Joseph's Roman Catholic (RC) Primary School in Gabalfa and St Peter's Roman Catholic (RC) Primary School in Plasnewydd also serve these communities.



Welsh-medium

Ysgol Mynydd Bychan serves a catchment area that includes the community of Cathays and parts of the communities of Gabalfa, Heath and Plasnewydd.

The catchment areas of Ysgol Y Wern, Ysgol Glan Ceubal and Ysgol Melin Gruffydd lie adjacent to the catchment area of Ysgol Mynydd Bychan.



Other provision

Cardiff's wider education community includes a number of independent schools. Cardiff Muslim Primary School and Kings Monkton are located in Cathays and Plasnewydd communities respectively.

How many primary school places are needed?

When considering how many school places are needed, the following factors are important:

- The number of places in each school
- The total number of children in the area
- Where these children live
- How many children will need places in future?



English-medium primary school places

The number of places in local English-medium primary schools

The capacity of a primary school is the number of places available in all age groups from Reception to Year 6 for children aged four to eleven.

The Admission Number of a school is the number of pupils that can be admitted in each year in a school. The capacity and admission number of a school are based on how classrooms and other spaces in the school are used for teaching and learning.

Table 4: Places available at English-medium primary schools serving the area. 2022/2023

| School | Current published capacity (age 4-11) | Places per year group (age 4 – 11) | Nursery place | Language medium | Category | Age range |
|--------------------------------|---------------------------------------|------------------------------------|---------------|-----------------|--------------------------------|-----------|
| Allensbank Primary School | 315* | 30 | 32 | English medium | Community primary school | 3-11 |
| Gladstone Primary School | 210** | 30 | 64 | English medium | Community primary school | 3-11 |
| Albany Primary School | 420 | 60 | 64 | English medium | Community primary school | 3-11 |
| St Monica's CiW Primary School | 146 | 20 | 0 | English medium | Voluntary aided primary school | 4-11 |
| St Joseph's RC Primary School | 210 | 30 | 32 | English medium | Voluntary aided primary school | 3-11 |
| St Peter's RC Primary School | 420 | 60 | 80 | English medium | Voluntary aided primary school | 3-11 |
| Total | 1721 | 270 | 272 | | | |

*Capacity capped at 315 places but sufficient accommodation for up to 360 places plus two specialist classrooms, or 420 places without specialist classrooms by assigning rooms for other purposes.

**Capacity capped at 210 places but sufficient accommodation for up to 270 places, if resource rooms assigned as classrooms.

The total number of children attending English-medium primary schools in the area

The most recent verified school census data available at the time of publication is from January 2022.

Intakes to Albany Primary School, Allensbank Primary School and Gladstone Primary School have fluctuated in recent years.

Table 5 shows

- the current capacity and combined Published Admission Numbers at entry to primary school, at the time of admission
- the number of pupils enrolled in each year group
- and the number/percentage of surplus places for each year group

The Published Admission Number at Allensbank Primary School was reduced from 45 places to 30 places from September 2022 to better reflect the demand for places. The Published Admission Numbers at Albany Primary School and Gladstone Primary School have been retained at 60 places and 30 places respectively, throughout the period.

| Table 5: School Number on Roll Data (PLASC 2022) | | | | | | | | | |
|--|--------|--------|--------|--------|--------|--------|--------|-------------------------------|--------------------|
| School | Rec | Year 1 | Year 2 | Year 3 | Year 4 | Year 5 | Year 6 | Number On Roll (Rec – Year 6) | Published Capacity |
| Allensbank Primary School | 24 | 24 | 29 | 32 | 31 | 22 | 31 | 193 | 315 |
| Gladstone Primary School | 23 | 29 | 24 | 26 | 20 | 27 | 24 | 173 | 210 |
| Albany Primary School | 38 | 56 | 56 | 58 | 57 | 58 | 55 | 378 | 420 |
| Total pupils/ places | 85 | 109 | 109 | 116 | 108 | 107 | 110 | 744 | 945 |
| Places available (Published Admission Number) | 135 | 135 | 135 | 135 | 135 | 135 | 135 | | |
| Surplus places – each year group | 50 | 26 | 26 | 19 | 27 | 28 | 25 | | |
| Surplus places – each year group (%) | 37.0 % | 19.3 % | 19.3 % | 14.1 % | 20.0 % | 20.7 % | 18.5 % | | |

Allowing for the reduced Published Admission Number at Allensbank Primary School, the total number of places available in each age group would be 120.

Each of the above English-medium schools has a high ‘pupil mobility’, that is to say that the number of children on roll in each year changes frequently, from month to month. The number of children enrolling at each school increases significantly above the number of children allocated places on offer day for entry to Reception.

Where do these children live?

Table 6 overleaf sets out the number of pupils resident in the catchment areas of Albany Primary School, Allensbank Primary School and Gladstone Primary School, and the schools attended by those pupils.

Table 6: Enrolled school of pupils resident in the catchment areas of Albany Primary School, Allensbank Primary School and Gladstone Primary School (Source: PLASC 2022)

| Catchment area of home address | | | |
|---|------------|------------|------------|
| School | Albany | Allensbank | Gladstone |
| Albany Primary School | 169 | 4 | 20 |
| Allensbank Primary School | 3 | 122 | 18 |
| Gladstone Primary School | 11 | 30 | 106 |
| Enrolled in other English-medium community schools | 115 | 133 | 47 |
| Subtotal – pupils enrolled in any English-medium Community schools | 298 | 289 | 191 |
| Enrolled in Welsh-medium Community schools | 25 | 145 | 39 |
| Enrolled in Faith schools | 80 | 150 | 64 |
| Enrolled in special schools | 9 | 13 | 6 |
| Totals | 412 | 597 | 300 |

The number of children resident within the catchment areas of Albany, Allensbank and Gladstone, taking up a place in any English-medium community school in Cardiff, totals 778. However, within that number, there are 483 children enrolled at these three schools and 295 enrolled elsewhere.

Future demand for English-medium primary school places

Table 7 below sets out the recent demand for Reception places in English-medium primary schools of children resident in the catchment areas of Albany Primary School, Allensbank Primary School and Gladstone Primary School, and the projected future demand for places in each catchment area. These updated projections take account of the most recent school census data (PLASC) published in 2022, and the most recent NHS GP registration data supplied in August 2022.

| Table 7: Recent and projected take up of Reception places in any English-medium community schools of pupils' resident in the catchment areas of Albany Primary School, Allensbank Primary School and Gladstone Primary School | | | | | | | | | | |
|--|------------------|------------------------------------|-----------|-----------|-----------|-----------|------------------------------------|-----------|-----------|-----------|
| Catchment area | Admission Number | Recent demand (school census data) | | | | | Projected demand in catchment area | | | |
| | | 2017/2018 | 2018/2019 | 2019/2020 | 2020/2021 | 2021/2022 | 2022/2023 | 2023/2024 | 2024/2025 | 2025/2026 |
| Albany | 60 | 49 | 46 | 46 | 42 | 39 | 42 | 48 | 54 | 54 |
| Allensbank | 30 | 40 | 42 | 37 | 28 | 36 | 37 | 37 | 33 | 30 |
| Gladstone | 30 | 36 | 25 | 30 | 34 | 29 | 39 | 33 | 32 | 35 |
| Total | 120 | 125 | 113 | 113 | 104 | 104 | 118 | 118 | 119 | 119 |
| Surplus places (compared to school) | | -5 | 7 | 7 | 16 | 16 | 2 | 2 | 1 | 1 |
| Surplus % | | -4.2% | 5.8% | 5.8% | 13.3% | 13.3% | 1.7% | 1.7% | 0.8% | 0.8% |

The above recent demand is extracted from the most recent PLASC data (February 2022) and represents the number of children in each catchment area taking up a place in English-medium education in any Cardiff school. Projected demand takes account of the recent percentage of pupils taking up a place, modelled against NHS population data. Birth data for the 2026/2027 school intake year is not yet available.

For comparison, the number of children allocated a place in Reception class at Albany Primary School, Allensbank Primary School or Gladstone Primary School on offer day for the September 2022 intake totalled 110 compared to the combined Published Admission Numbers in September 2022 of 120 places.

Overall, the number of learners taking up places at these schools in each year group, in table 5, has been lower than the total demand for places within the catchment areas of those schools, in table 6, as parents have taken up places at other schools according to their preference.

The existing combined capacity of 4 Forms of Entry (120 places per year group) between Albany Primary School, Allensbank Primary School or Gladstone Primary School has provided sufficient capacity to accommodate demand from within the three catchment areas in recent years, when intakes to schools were at high levels city-wide.

Welsh-medium primary school places

The number of places in local Welsh-medium primary schools

Table 8 below shows details of places available at schools serving the local area, and the north / central area of Cardiff.

| Table 8: Places available at Welsh-medium primary schools serving the area | | | | | | |
|--|---------------------------------------|------------------------------------|---------------|-----------------|--------------------------|-----------|
| School | Current published capacity (age 4-11) | Places per year group (age 4 – 11) | Nursery place | Language medium | Category | Age range |
| Ysgol Glan Ceubal | 210 | 30 | 48 | Welsh medium | Community primary school | 3-11 |
| Ysgol Gymraeg Melin Gruffydd | 420 | 60 | 64 | Welsh medium | Community primary school | 3-11 |
| Ysgol Mynydd Bychan | 192 | 30 | 64 | Welsh medium | Community primary school | 3-11 |
| Ysgol y Wern | 630 | 90 | 80 | Welsh medium | Community primary school | 3-11 |
| Total | 1452 | 210 | 256 | | | |

The total number of children attending Welsh-medium primary schools in the area

Table 9 overleaf shows:

- the current capacity and combined Published Admission Numbers at entry to each Welsh-medium community primary school at the time of admission
- the number of pupils enrolled in each year group
- the number/percentage of surplus places for each year group.

The Published Admission Number at Ysgol Y Wern was increased from 60 places to 75 places from 2015/16, and to 90 places from 2021/22, reflecting an expansion of the school and reassessment of its capacity. However, temporary arrangements were agreed to allow the school to admit up to 75 pupils from 2014/15 and to admit up to 90 pupils from 2016/17 to better reflect the demand for places.

The Published Admission Numbers at Ysgol Glan Ceubal, Ysgol Gymraeg Melin Gruffydd and Ysgol Mynydd Bychan have been retained at 30 places, 60 places and 30 places respectively throughout the period.

Table 9: School Number on Roll Data (PLASC 2022)

| School | Rec | Year 1 | Year 2 | Year 3 | Year 4 | Year 5 | Year 6 | Number On Roll (Rec – Year 6) | Published Capacity |
|--|-------|--------|--------|--------|--------|--------|--------|-------------------------------|--------------------|
| Ysgol Glan Ceubal | 19 | 29 | 12 | 30 | 20 | 23 | 18 | 151 | 210 |
| Ysgol Gymraeg Melin Gruffydd | 58 | 58 | 46 | 61 | 60 | 60 | 60 | 403 | 420 |
| Ysgol Mynydd Bychan | 29 | 30 | 31 | 31 | 30 | 24 | 28 | 203 | 192 |
| Ysgol Y Wern | 89 | 89 | 86 | 85 | 88 | 80 | 74 | 591 | 630 |
| Total pupils/ places | 195 | 206 | 175 | 207 | 198 | 187 | 180 | 1348 | 1452 |
| Places available (agreed Admission Number) | 210 | 210 | 210 | 210 | 210 | 210 | 195 | | |
| Surplus places – each year group | 15 | 4 | 35 | 3 | 12 | 23 | 15 | | |
| Surplus places – each year group (%) | 7.1 % | 1.9 % | 16.7 % | 1.4 % | 5.7 % | 11.0 % | 7.7 % | | |



Where do these children live?

Table 10 below sets out the number of pupils resident in January 2022 within the catchment areas serving Welsh-medium primary schools in the north / central area of Cardiff enrolled in Welsh-medium primary schools.

Table 10: Enrolled school of pupils resident in the catchment areas of Ysgol Glan Ceubal, Ysgol Gymraeg Melin Gruffydd, Ysgol Mynydd Bychan and Ysgol y Wern (Source: PLASC 2022)

| Catchment area of home address | | | | |
|---|-------------------|------------------------------|---------------------|--------------|
| School | Ysgol Glan Ceubal | Ysgol Gymraeg Melin Gruffydd | Ysgol Mynydd Bychan | Ysgol Y Wern |
| Ysgol Glan Ceubal | 94 | 4 | 11 | 6 |
| Ysgol Gymraeg Melin Gruffydd | 21 | 339 | 12 | 21 |
| Ysgol Mynydd Bychan | 6 | 0 | 181 | 3 |
| Ysgol Y Wern | 0 | 14 | 19 | 541 |
| Enrolled in other Welsh-medium community schools | 9 | 11 | 7 | 10 |
| Subtotal – pupils enrolled in any Welsh-medium Community schools | 130 | 368 | 230 | 581 |
| Enrolled in English-medium Community schools | 541 | 832 | 742 | 2499 |
| Enrolled in Faith schools | 63 | 28 | 261 | 152 |
| Enrolled in special schools | 7 | 5 | 22 | 19 |
| Totals | 741 | 1233 | 1255 | 3251 |

Following consultation in early 2019, the Council agreed to reduce the Ysgol Mynydd Bychan catchment area and to transfer the southern part of its catchment to that of Ysgol Hamadryad from September 2021. The above table represents the new arrangements, including the reduced Ysgol Mynydd Bychan catchment area.

Future demand for Welsh-medium primary school places

Table 11 below sets out the recent demand for Reception places in Welsh-medium primary schools of children resident in the catchment areas of Ysgol Glan Ceubal, Ysgol Gymraeg Melin Gruffydd, Ysgol Mynydd Bychan and Ysgol Y Wern, and the projected future demand for places in each catchment area. These updated projections take account of the most recent school census data (PLASC) published in 2022, and the most recent NHS GP registration data supplied in August 2022.

Projections taking account of the recent take up of places, and the fall in the pre-school population in the area, suggest this fluctuation will continue with a slight overall decrease based on the decrease in birth-rates. However, the number of children within the Ysgol Mynydd Bychan catchment area taking up a place in a Welsh-medium school is projected to exceed the number of places available at entry to the school.

Table 11: Recent and projected take up of Reception places in Welsh-medium schools, of pupils' resident in the catchment areas of Ysgol Glan Ceubal, Ysgol Gymraeg Melin Gruffydd, Ysgol Mynydd Bychan and Ysgol Y Wern

| Catchment area | Admission Number | Recent demand (school census data) | | | | | Projected demand in catchment area | | | |
|-------------------------------------|------------------|------------------------------------|-----------|-----------|-----------|-----------|------------------------------------|-----------|-----------|-----------|
| | | 2017/2018 | 2018/2019 | 2019/2020 | 2020/2021 | 2021/2022 | 2022/2023 | 2023/2024 | 2024/2025 | 2025/2026 |
| Ysgol Glan Ceubal | 30 | 16 | 25 | 12 | 23 | 16 | 16 | 17 | 15 | 18 |
| Ysgol Gymraeg Melin Gruffydd | 60 | 61 | 55 | 37 | 55 | 57 | 59 | 46 | 39 | 48 |
| Ysgol Mynydd Bychan | 30 | 38 | 38 | 35 | 42 | 31 | 37 | 37 | 35 | 31 |
| Ysgol Y Wern | 90 | 81 | 90 | 87 | 90 | 89 | 83 | 80 | 77 | 78 |
| Total | 210 | 196 | 208 | 171 | 210 | 193 | 195 | 180 | 166 | 175 |
| Surplus places (compared to school) | | 14 | 2 | 39 | 0 | 17 | 15 | 30 | 44 | 35 |
| Surplus % | | 6.7% | 1.0% | 18.6% | 0.0% | 8.1% | 7.1% | 14.3% | 21.0% | 16.7% |

The above recent demand is extracted from the most recent PLASC data (February 2022) and represents the number of children in each catchment area taking up a place in Welsh-medium education in any Cardiff school. Projected demand takes account of the recent percentage of pupils taking up a place, modelled against future NHS population data. Birth data for the 2026/2027 school intake year is not yet available.

The number of children actually allocated a place in Reception class at Ysgol Glan Ceubal, Ysgol Gymraeg Melin Gruffydd, Ysgol Mynydd Bychan or Ysgol Y Wern on offer day for the September 2022 intake totalled 189, marginally below the projected number of 195.

Overall, there has been close alignment between the number of learners enrolled at Ysgol Gymraeg Melin Gruffydd and Ysgol Y Wern, set out in table 9, and the demand for places within the catchment areas of those schools, in table 10.

The take up of places at Ysgol Glan Ceubal has varied greatly but has often exceeded the demand for places from within its catchment area as it has admitted children from neighbouring catchment areas who were unable to access a place at their local school.

Ysgol Mynydd Bychan has been fully subscribed at entry in each of the past five intakes. In each year, there were sufficient places in schools serving neighbouring catchment areas to accommodate those pupils who were unable to gain admissions. However, for children within the catchment area of Ysgol Mynydd Bychan, alternative school places were often significantly further from their home address.

Table 12, below, summarises the admissions allocation data on offer day for Ysgol Mynydd Bychan in the past five intakes.

Table 12: Enrolled school of pupils resident in the catchment areas of Ysgol Glan Ceubal, Ysgol Gymraeg Melin Gruffydd, Ysgol Mynydd Bychan and Ysgol y Wern (Source: PLASC 2022)

| School | Intake Year | | | | |
|---|-------------|---------|---------|---------|---------|
| | 2018/19 | 2019/20 | 2020/21 | 2021/22 | 2022/23 |
| Places available | 30 | 30 | 30 | 30 | 30 |
| Places allocated | 30 | 30 | 30 | 30 | 30 |
| Total Preferences refused | 11 | 4 | 22 | 7 | 6 |
| Within catchment area preferences refused | 7 | 0 | 15 | 3 | 2 |
| Furthest distance of child admitted | 0.592 | 1.19 | 0.584 | 0.788 | 0.937 |

In four of the past five intakes, the school has been unable to admit all children within its catchment area who stated a preference for a place in its Reception class. The take up of places by children in the south of catchment area, in parts of Cathays and Roath is low and applicants in this area would have been unable to gain admission. Many applicants resident within the catchment area, who live north of Eastern Avenue, are also unable to gain admission.

For applicants in the south of the Ysgol Mynydd Bychan catchment area, the next nearest schools are significantly further away. The next nearest schools are Ysgol Glan Ceubal (Llandaff North), Ysgol Glan Morfa (Splott) and Ysgol Y Berllan Deg (Llanedeyrn). For applicants whose home address is north of Eastern Avenue, the next nearest schools are Ysgol Gymraeg Melin Gruffydd, Ysgol Glan Ceubal or Ysgol Y Wern. Each of these is further away, and both Ysgol Gymraeg Melin Gruffydd and Ysgol Y Wern have been fully subscribed in many of their recent intakes.

Taking account of the projected lower intakes to primary schools until at least 2025/2026, there would be sufficient provision across the wider area to accommodate growth in Welsh-medium in the short term if there was no percentage growth, or a low level of growth, in demand. Changes to catchment areas could provide a balance between the number of places available, and the projected demand for places, and would allow for a limited increase in take up.

However, the projected level of surplus places would not be sufficient to significantly increase Welsh-medium take up in the longer term, in order to meet Cardiff's targeted growth as set out in Cardiff's approved Welsh in Education Strategic Plan (WESP).

Whilst changes to catchment areas could improve the balance of places, these changes alone would not support long term growth and would not represent a sufficient contribution towards meeting the growth target set in Cardiff's WESP.

Welsh-medium provision - targeted growth

Over the last ten years the increasing demand for Welsh-medium places in Cardiff was met and driven/supported by expanding the existing Welsh-medium schools. More provision may be needed to accommodate further increases in demand in some areas of Cardiff. The number of children taking up Welsh-medium places would increase further by opening or expanding more Welsh-medium schools.

There has been an average growth in the take up of Welsh-medium places of one quarter of a percentage point per year in recent years.

If the percentage of pupils entering Welsh-medium Reception classes increases at the same rate between 2021 and 2030, 20% of pupils would enter Welsh-medium Reception classes in September 2030. The target set for Cardiff by the Welsh Government is to deliver growth so that between 25% and 29% of Year 1 learners are educated through the medium of Welsh by 2031.

The existing capacity of Welsh-medium primary schools and classes in Cardiff would be sufficient to accommodate up to 21.8% of the pupil population, who are expected to enrol in the 2024/ 2025 school year. However, to achieve the targeted level of growth, annual growth of between 0.75% and 1.15% growth would be required city-wide.

Table 13, below, provides an indicative representation of a 1% point or 2% point per year growth to increase Welsh-medium take-up in the Ysgol Mynydd Bychan catchment area, taking account of the changing population in the catchment area.

Table 13: Projected and forecast targeted demand for places in Welsh-medium Reception classes, of children resident in the Ysgol Mynydd Bychan catchment area, 2022 to 2026

| School Year | Existing take up | Projected take up – assuming no % increase | +1% point increase 2020/21 | +1% of catchment population | +2% points increase | +2% of catchment population |
|-------------|------------------|--|----------------------------|-----------------------------|---------------------|-----------------------------|
| 2022/23 | 16.2% | 37 | | | | |
| 2023/24 | 16.2% | 37 | 17.2% | 39 | 18.2% | 41 |
| 2024/25 | 16.2% | 35 | 18.2% | 41 | 20.2% | 46 |
| 2025/26 | 16.2% | 31 | 19.2% | 42 | 22.2% | 49 |
| 2026/27 | 16.2% | 34 | 20.2% | 39 | 24.2% | 46 |

The above increase in take up of places could be accommodated in other schools if there was no growth in take up elsewhere. However, the Council must increase the take up of places throughout the city to meet the set targets. The Council cannot, therefore, rely on accommodating the targeted growth in demand in schools serving neighbouring catchment areas.

Any growth in the percentage of children taking up places in Welsh-medium provision would result in an equivalent reduced take up of places in English-medium provision, which may affect local schools and/or schools further afield.

Whilst a reasonable level of surplus would be required in the Welsh-medium sector to support future growth, consideration must be given to the impact on existing school provision of carrying a high level of surplus places in the English-medium sector.

School Admissions data – April 2023

School admissions data for the September 2023 intake to primary education confirms that 69 first preferences were submitted for the combined total of 120 places available at Albany Primary School, Allensbank Primary School and Gladstone Primary School, by the published closing date of Monday 9 January 2023.

There were 61 first preferences submitted for the combined total of 110 places available at St Monica’s Church in Wales Primary School, St Joseph’s RC Primary School, and St Peter’s RC Primary School.

There were 207 first preferences were submitted for the combined total of 210 places available at Ysgol Glan Ceubal, Ysgol Gymraeg Melin Gruffydd, Ysgol Mynydd Bychan and Ysgol Y Wern.

On national offer day (Monday 17 April 2023), the Council allocated the following community school places in accordance with parental preferences:

Table 14: Summary of the allocation of places at community primary schools, as at 17 April 2023

| School | Admission Number | Places allocated |
|------------------------------|------------------|------------------|
| Albany Primary School | 60 | 28 |
| Allensbank Primary School | 30 | 17 |
| Gladstone Primary School | 30 | 23 |
| Ysgol Glan Ceubal | 30 | 30 |
| Ysgol Gymraeg Melin Gruffydd | 60 | 60 |
| Ysgol Mynydd Bychan | 30 | 26 |
| Ysgol Y Wern | 90 | 83 |

The Governing Bodies of the following schools also allocated the following places in accordance with parental preferences.

Table 15: Summary of the allocation of places at faith-based primary schools, as at 17 April 2023

| School | Admission Number | Places allocated |
|--------------------------------|------------------|------------------|
| St Joseph's RC Primary School | 30 | 15 |
| St Monica's CiW Primary School | 20 | 10 |
| St Peter's RC Primary School | 60 | 36 |

A full summary of the number of places allocated on offer day is published on the Council's website at www.cardiff.gov.uk/schooladmissions

The combined level of surplus places in Reception year at Albany Primary School, Allensbank Primary School and Gladstone Primary School on offer day was 43%. The Council expects the combined number allocated to reach approximately 90 pupils by September 2023. This is in part because some children in nursery classes did not apply by the closing date, and also due to families moving into the area at a later date.

The combined level of surplus places in Reception year at Ysgol Glan Ceubal, Ysgol Gymraeg Melin Gruffydd, Ysgol Mynydd Bychan and Ysgol Y Wern on offer day was 5%. The Council expects little or no change to the number of pupils allocated places at these school by September 2023. This is in part because two schools are fully subscribed, and also because of few families moving into the area at a later date opt for Welsh-medium education.

Area Map



Table 16 below sets out details of these schools and the distances between the school sites based on safe walking routes (miles)

Table 16: Distances between school sites based on safe walking routes (miles)

| School | Intake Year | | | | |
|---------------------------|---------------------------|--------------------------|-----------------------|-------------------------------|---------------------|
| | Allensbank Primary School | Gladstone Primary School | Albany Primary School | St Monica's CW Primary School | Ysgol Mynydd Bychan |
| Allensbank Primary School | N/A | 0.44 | 1.19 | 0.5 | 0.22 |
| Gladstone Primary School | 0.44 | N/A | 0.82 | 0 | 0.41 |
| Albany Primary School | 1.19 | 0.82 | N/A | 0.76 | 1.16 |
| St Monica's CW Primary | 0.5 | 0 | 0.76 | N/A | 0.48 |
| Ysgol Mynydd Bychan | 0.22 | 0.41 | 1.16 | 0.48 | N/A |



School sites

Allensbank Primary School site



Allensbank Primary School is located on a 0.5-hectare site on Llanishen Street, Cardiff CF14 3QE. The school is approximately 0.2 miles from Ysgol Mynydd Bychan and 0.44 miles from Gladstone Primary School.

The published capacity of the school, in Reception to Year 6, is 315 places (1.5 forms of entry), arranged over separate infant and junior buildings. The school currently operates a 48-place nursery and a Speech and Language early intervention class for up to 8 Foundation Phase pupils.

From 2022/2023 the Admission Number for Allensbank Primary School has been set at 30 places per year group.

The site could accommodate a two form of entry primary school (up to 420 pupils) plus nursery, or up to 360 pupils plus nursery and Specialist Resource Base/Early Intervention Class provision. As the Speech and Language early intervention class is a city-wide provision for children from across the city, this could be relocated if necessary.

The school occupies two Grade 2 listed buildings which have been assessed as Condition category C+ (Poor with major defects) and Suitability category B (Satisfactory). The school buildings are generally in a satisfactory condition although works to external walls, windows and roofs are underway through the Council's Capital Asset programme. Some internal areas are suffering with an infestation of dry rot, and treatment will be ongoing until the dry rot is eradicated. The sanitary provision requires some refurbishment, and the site has some drainage issues to be resolved. The ongoing works at the school are scheduled to complete in Autumn 2023.

Gladstone Primary School/St Monica's CiW Primary School site



Gladstone Primary School is co-located with St Monica's Church in Wales Primary School on a 0.5-hectare site on Whitchurch Road, Cardiff CF14 3JL, 0.44 miles from Allensbank Primary School and 0.41 miles from Ysgol Mynydd Bychan.

Gladstone Primary School was formerly two separate infant and junior schools, with separate buildings. Each school was organised as two forms of entry, allowing up to 60 pupils in each year group. These schools were amalgamated in September 2000 to a single one form entry primary school, allowing up to 30 pupils in each year group, and consolidated in the junior building. St Monica's Church in Wales Primary School transferred from a site on Merthyr Road to share the Gladstone site in 2004.

Gladstone Primary School currently occupies the junior building on the shared site.

The published capacity of Gladstone Primary School, in Reception to Year 6, is 210 places (one form of entry). The capacity could increase to 270 places if resource rooms were used as classbases.

St Monica's Church in Wales Primary School occupies the infant building on the shared site. The published capacity of the school, in Reception to Year 6, is 146 places (0.6 forms of entry). The St Monica's site was transferred from the Council to the Llandaff Diocesan Board of Finance in September 2004.

Although the St Monica's Church in Wales Primary School buildings include the relevant facilities to allow a school to operate separately from the neighbouring Gladstone buildings, the buildings would not be sufficient to accommodate a one form entry school.

The combined Gladstone and St Monica's school buildings could accommodate a two Form Entry primary school (up to 420 pupils) with nursery. The Boathouse building, currently used for storage, could provide an additional resource base but would require investment to do so.

The schools occupy two Grade 2 listed buildings which have been assessed as Condition category C+ (Poor with major defects) and Suitability category B (Satisfactory). The school buildings are generally in a satisfactory condition, with the exception of the Boat House at Gladstone which requires large scale roofing works to remedy water ingress and damp to internal areas. Works to external walls, windows and roofs were planned through the Council's Capital Asset programme and are underway. These works have been phased appropriately to minimise disruption to teaching and learners.

Boundary walls showing signs of deterioration due to age have recently been rebuilt. Works to repair and refurbish the building formerly used for childcare on the St Monica's site is scheduled for completion in summer term 2023.

The remaining works to the St Monica's building are scheduled for completion by September 2023. Works to the Gladstone building are scheduled for completion by the end of December 2023.



Ysgol Mynydd Bychan site



Ysgol Mynydd Bychan is located on a 0.2-hectare site on New Zealand Road, Cardiff CF14 3BR.

The published capacity of the school, in Reception to Year 6 is 192 places (0.9 forms of entry) arranged over one block. The school also operates a 64-place nursery provision.

The school currently admits up to 30 pupils per year group; however, seven of the school's eight classrooms are no more than 45m² in size and should ordinarily accommodate up to 24 pupils.

The site could accommodate a 0.9 form of entry school, utilising each of the eight classrooms, with nursery. Alternatively, the site could accommodate a 0.8 form of entry school plus a specialist class, with nursery.

There is not enough space on the site to allow for expansion of the school.

This site comprises of one building split into 2 blocks of differing ages, although the site has been awarded a Condition rating of B (Satisfactory with minor deterioration) and a Suitability rating of B (Satisfactory but does not support curriculum in some areas). Some minor maintenance and cyclical works are required. There are currently no plans for Capital Asset works to be undertaken on this building, however the building does remain under review.

Current Quality and Standards

Each of the schools are subject to ongoing monitoring and support through the Central South Consortium and periodic inspection by Estyn.

Allensbank Primary School

The following information has been provided by the Central South Consortium regarding quality and standards at Allensbank Primary School.

- The school gathers and analyses a range of first-hand evidence upon which the school's strategic plan for improvement is based.
- The school knows its strengths and areas for development, and these are reflected in the school improvement plan. The priorities are identified through a calendar of monitoring activities.
- The school's wider senior leadership team are making the Curriculum for Wales a reality through their wider research and innovation.
- The school leaders and staff work collaboratively with pupils, parents, and governors to create and share a vision for their curriculum.
- The school has engaged in ALN reform and has responded to the statutory requirements.
- The school worked closely with pupils and their families during the pandemic and subsequently to support them in a number of ways, such as developing online teaching; providing wellbeing sessions.
- The school continues to develop parental involvement with effective use of technology which engages parents allowing them the opportunity to communicate in the language of the home.

The most recent Estyn inspection of the school in January 2020 judged the school's standards, wellbeing and attitudes to learning, teaching and learning experiences, care support and guidance and leadership and management as good.

Gladstone Primary School

The following information has been provided by the Central South Consortium regarding quality and standards at Gladstone Primary School.

- The school knows its strengths and areas for developments with the latter incorporated into the school improvement plan. This knowledge is informed by a range of monitoring activities over the course of the academic year, many of which the improvement partner has been involved in.
- The school has engaged with curriculum design and is developing a curriculum to reflect the school's community. Two senior leaders have taken the lead with this work and ensured developments are based on informed decisions through visits to other schools; personal professional reading and action research.
- The school has engaged in ALN reform and has responded to the statutory requirements.

- The school worked closely with pupils and their families during the pandemic and subsequently to support them in a number of ways, such as developing online teaching; providing wellbeing sessions and acting as a source of information and advice.
- School leaders work hard to meet the needs of its varied and diverse community and have established a positive supportive ethos in the school. An investment in Thrive and ELSA has helped to provide emotional support for pupils and their families. The school has achieved its Silver Rights Respecting award.
- The headteacher works tirelessly to support all pupils and their families to ensure that no pupil is left behind either academically or pastorally.

The most recent Estyn inspection of Gladstone Primary school in November 2022 judged the school's learning, wellbeing and attitudes to learning, teaching and learning experiences, care support and guidance and leadership and management as good.

St Monica's Church in Wales Primary School

The following information has been provided by the Central South Consortium regarding quality and standards at St Monica's Church in Wales Primary School.

- The school knows its strengths and areas for developments with the latter incorporated into the school improvement plan. This knowledge is informed by a calendar of monitoring activities.
- The school has engaged with curriculum design and is developing a curriculum to reflect the school's community.
- The school has engaged in ALN reform and has responded to the statutory requirements.
- The school worked closely with pupils and their families during the pandemic and subsequently to support them in a number of ways, such as developing online teaching; providing wellbeing sessions and supplying food parcels.
- The school, as a Church school, has strong community links, including those with The Table church and works hard to meet the needs of its varied and diverse community. It has invested in Thrive to provide emotional support for pupils and their families.
- The headteacher works tirelessly to support all pupils and their families to ensure that no pupil is left behind either academically or pastorally.

The most recent Estyn inspection in April 2019 judged the St Monica's CW Primary School standards, wellbeing, and attitudes to learning, teaching and learning experiences, care support and guidance and leadership and management as good.

Ysgol Mynydd Bychan

The following information has been provided by the Central South Consortium regarding quality and standards at Ysgol Mynydd Bychan.

- The school uses a wide range of self-evaluation processes enabling accurate identification of strengths and areas for development which feed into their School Development Plan.
- Regular self-evaluation and monitoring activities throughout the year enable the school to evaluate progress against agreed priorities in the School Development Plan.
- The school has engaged with education reform and are working on further developing their implemented curriculum in line with guidance and in collaboration with the cluster and other partners.
- The school has responded to the requirements of the ALN reform and fulfils its statutory duties in this respect.
- Grant funding is utilised to provide intervention and support to identified pupils, minimising the impact of Covid on education, standards, and wellbeing.
- The school knows its community well and engagement with wider stakeholders, especially parents, is an intrinsic part of the school's vision. E.g., their regular 'Day to make a difference' initiative where the community work together on a weekend to improve the school and its environment.
- The school is deeply rooted in its community with pupil wellbeing integral and a culture of high expectations and achievement for all pupils' part of its core values.
- The Headteacher and senior leaders provide a culture of distributed leadership, working in partnership with the Governing Body to meet the needs of all pupils, in a safe and nurturing environment.

The most recent Estyn inspection in November 2015 judged the school's performance as good (many strengths and no important areas requiring significant improvement) with prospects for improvement also judged as good.



Proposed changes to English-medium and Welsh-medium school places

The existing number of English-medium primary school places at Albany, Allensbank and Gladstone Primary Schools is sufficient to accommodate the projected demand for places at schools. It also allows for a high margin of surplus to respond to any potential fluctuation or sustained increase in demand, and the high levels of pupil mobility in the area. The Council has investigated the ability of sites to support the reorganisation of provision. Three options have been identified to reorganise primary school provision in the area.

- The options identified would allow for a consolidation of English-medium community primary school provision at an equivalent level, or a marginal reduction to the existing arrangements.
- Each of the options would allow for an expansion of Ysgol Mynydd Bychan.
- There would be no change in the number of places for primary school pupils at St Monica's Church in Wales Primary School.

The Council has investigated alternative site options that may be available and centrally located within the existing Ysgol Mynydd Bychan catchment area, to allow for the school to be expanded.

There is insufficient space on the existing Ysgol Mynydd Bychan site to allow this for expansion. There is no suitable vacant site available in the area local to the school that could accommodate an enlarged Ysgol Mynydd Bychan.

There is also sufficient capacity within existing schools serving the area to enable the reorganisation of existing provision. Reorganisation of provision would present an appropriate means of balancing the availability and take up of both English-medium and Welsh-medium provision in the area. It would also allow for a more effective and efficient use of resources. This would retain flexibility in the school estate to respond to any future population changes affecting the area.

The Council has discounted reorganisation of provision on the Albany Primary School site. Albany Primary School is a greater distance from the home addresses of pupils currently enrolled at Ysgol Mynydd Bychan, has a relatively low level of surplus overall of c10%, and each of its classrooms is utilised as a classbase.

Any proposals to increase the take up of places in Welsh-medium provision, whilst intakes to schools are reducing, would mean that the take up of places in English-medium schools would further reduce.

Information on each option can be seen at pages 39 - 63.

Option 1 - Site Organisation



The Council is consulting on the following changes to English-medium community primary school provision:

- Amalgamate Allensbank and Gladstone Primary Schools, by
 - o Formally closing Allensbank Primary School
 - o Formally closing Gladstone Primary School
 - o Establishing a new 420 place (two forms of entry) English-medium Primary School with nursery on the current shared Gladstone Primary School / St Monica's CiW Primary School site

The Governing Body of St Monica's CiW Primary School is consulting on the following changes:

- Transfer St Monica's CiW Primary School to the current Ysgol Mynydd Bychan site and establish nursery provision at the school

The Council is consulting on the following changes to Welsh-medium community primary school provision:

- Transfer Ysgol Mynydd Bychan to the current Allensbank Primary School site
- Increase the capacity of Ysgol Mynydd Bychan from 192 places (0.9 form of entry) to 420 places (two forms of entry)
- Increase the number of nursery places at Ysgol Mynydd Bychan from 64 to 96

The proposed changes would be implemented from September 2025.

Admission to Primary Education

The current number of places at entry to primary education at Allensbank Primary School is 30 (one form of entry). The current number of places at entry to primary education at Gladstone Primary School is 30 (one form of entry). From September 2025, the number of places at entry to primary education at the new English-medium primary school would be 60 (two forms of entry).

The current number of primary school places at entry to primary education at St Monica's Church in Wales Primary School is 20 (0.7 form entry). It is proposed that the number of places would remain at 20 in September 2025.

The current number of primary school places at entry to primary education at Ysgol Mynydd Bychan is 30 (one form of entry). The number of primary school places at entry to primary education at Ysgol Mynydd Bychan from September 2025 would be 60 (two forms of entry).

All pupils on the roll of Allensbank Primary School and Gladstone Primary School at the time of the amalgamation (September 2025) would be offered the opportunity to transfer to the roll of the new primary school unless they wish to transfer to an alternative school.

Pupils on roll at St Monica's CiW Primary School at the time of the transfer (September 2025) would remain on the roll unless they wish to transfer to an alternative school.

Pupils on roll at Ysgol Mynydd Bychan at the time of transfer (September 2025) would remain on the roll unless they wish to transfer to an alternative school.

Nursery Provision

At present the Council funds 112 community nursery places between Allensbank Primary School and Gladstone Primary School. The number funded is reducing to 96 places next year, to reflect demand. It is proposed to retain sufficient accommodation to allow for up to 96 English-medium community nursery places at the new school.

Should the transfer of St Monica's Church in Wales Primary School to the current Ysgol Mynydd Bychan site be taken forward it is proposed that 32 part time nursery places are provided. This would develop continuity and progression in children's learning at the school from the age of three.

The number of nursery places at Ysgol Mynydd Bychan would be increased from 64 to 96 to support its growth to a two-form entry school.

Overall, accommodation to allow for an increased number of English-medium and Welsh-medium nursery places would be retained. The number of places funded would reflect the demand for places in the local area, as at present.

Additional Learning Needs provision

There is a Speech and Language early intervention class hosted by Allensbank Primary School. The Council admits up to 8 Foundation Phase children to this city-wide provision who were not making sufficient progress, but who have good prospects for returning to their local mainstream school.

Placements last 1 – 3 years, depending on progress. Pupils are dual registered at their local school and supported to return to that school at the end of the placement. Pupils continue to attend their local school for at least one day a week, to maintain links with local friends and to prepare for a successful reintegration to their local school.

Consideration would be given to establishing the city-wide Speech & Language class within the new school in consultation with the relevant school governing body / bodies, taking account of each school's aspirations.

The proposed expansion of Ysgol Mynydd Bychan to two forms of entry, and transfer to the Allensbank Primary School site could provide the opportunity for consideration to be given to the establishment of specialist resource base provision through the medium of Welsh. Separate proposals would have to be developed for this.

What are the benefits of the proposal?

The proposed changes would:

- provide a more economically sustainable pattern of school provision over the long term
- support schools to be financially sustainable in an improved pattern of provision through amalgamation
- support schools to allocate a greater proportion of budget to teaching and learning, thereby retaining and increasing opportunities for learners
- provide an improved balance between the availability and take up of both English-medium and Welsh-medium primary school places
- maintain the current number of English-medium primary school places serving the local area
- allow for the establishment of nursery provision at St Monica's CiW Primary School and the associated benefits
- support progress towards the Welsh in Education Strategic Plan (WESP) and Cymraeg 2050 targets

- support Ysgol Mynydd Bychan to maintain and continue to build on its excellent standards
- allow for a greater number of children to benefit from the education on offer at Ysgol Mynydd Bychan
- result in fewer children being refused admission to a local school
- as a minimum, maintain the current standards of education and allow each school to continue to improve education for all of their learners
- ensure that each school provision offered meets the diverse needs of the communities they currently serve and are able to serve in the future
- allow for the retention of school sites to future proof against changes in the population cycle

The establishment of a new two form entry English-medium primary school, and the expansion of Ysgol Mynydd Bychan to two form entry, would support teaching and learning by allowing for:

- the area to have more two form of entry schools. When compared with smaller schools, the scale of a two form entry primary school permits greater flexibility and opportunity for pupils due to an extended, more enhanced and secure financial resource base
- a two form entry school can provide a greater degree of stability at all levels of leadership including maintaining a full and stable complement of school governors
- the ability to employ more teaching and support staff would allow the two form entry schools to cover a wider range of curriculum expertise
- a greater number of teachers to share workload and expertise
- greater opportunities to professionally develop staff e.g., newly qualified teachers who can observe their parallel teacher
- opportunities for staff to teach to their strengths ensuring learners have the best education experience possible
- a greater number of teachers to lead on Areas of Learning, plus Religious Education, Relationships and Sexuality Education (RSE) and Digital Competency
- greater opportunities to offer a broader range of extra-curricular activities
- greater opportunities for distributed leadership

The establishment of nursery provision at St Monica's Church in Wales Primary School would:

- provide continuity of provision which reflects the ethos and culture of the school
- support the development of strong and effective parental links with the school from the earliest possible opportunity

- ease transition for a nursery-aged child when promoting to Reception class (where Reception admission application has been successful)
- allow for the early identification of vulnerable groups. This would mean that the needs of children can be identified as early as possible
- provide an opportunity for children to attend nursery at the same site as their older siblings. This should impact positively on parents' time and reduce the logistical difficulties that seeking an alternative childcare provision may cause
- provide continuity and progression between Early Years and Foundation Phase, enhancing the opportunity to appropriately address individual developmental and cultural needs.

Standards

The Council works closely with the governing bodies of schools to make sure that standards in schools are high, that teaching is good, and that leadership and governance is strong.

The standards at the four schools included in the proposed changes are good.

The establishment of a new two form entry English-medium primary school, the proposed expansion of Ysgol Mynydd Bychan to two forms of entry and the establishment of nursery provision at St Monica's provides the opportunity to realise a range of educational benefits that would allow for all of the schools to build on existing progress ensuring a positive impact on the quality and standards of education for current and future pupils.

Amalgamating Allensbank Primary School and Gladstone Primary School and combining their budget would allow for a redistribution of financial resources to schools. This would be possible as there would be one fewer school, and therefore a reduction in the number of lump sum allocations to individual schools.

Should Option 1 be progressed, it is proposed that the equivalent sum would be ringfenced for the newly established two form entry English-medium school for three years. This would support the school to further develop provision and/ or invest in resources to benefit its pupils, and to maintain and improve standards. Beyond the three-year period, this sum would be available for redistribution to primary schools city-wide.

Potential disadvantages of the proposals

- Compared to the current arrangements, there is potential for increased traffic congestion around the current Allensbank Primary School site and at the current shared Gladstone Primary/St Monica's CiW Primary School site at the start and end of the school day. However, the Council would work with the Governing Bodies of the schools to develop a Travel Plan to minimise any potential disruption.
- the proposal to close Allensbank Primary School and Gladstone Primary School would result in the loss of two historic institutions which are valued by their communities.

Risks

- there is a risk that there will be a rise in demand for English-medium places. However, the Council will monitor demand over the coming years to ensure that there are sufficient places for those requiring English-medium education. As the proposals retain all existing sites and do not reduce the accommodation available, they would retain flexibility for future changes that may be identified as appropriate.
- there is a risk that an increase in the number of pupils who wish to take up Welsh-medium places does not happen. The Council will keep its projections under review and would respond to any such changes in demand if required.
- There is a potential impact on the take up of places at neighbouring Welsh-medium schools. However, this is expected to be short term as the number of pupils attending Welsh-medium provision is targeted to grow as part of the development of the Welsh in Education Strategic Plan (WESP).
- There is a risk of potential disruption to pupils during the transition period whilst building /refurbishment works are undertaken. However, the Council has significant experience in the successful delivery of building projects on the sites of occupied schools as a result of progressing a large and growing school organisation programme. Any building work carried out would be managed effectively in consultation with the schools to ensure the full curriculum continues to be delivered and that high education standards and safety standards are maintained.

Human Resources and Finance Matters

English-medium

The number of teaching and learning roles required for a two form entry primary school is similar to the amount required for two one form entry primary schools. However, the type and number of roles required would be dependent on the number of pupils on roll and on the school budget position.

Where roles are duplicated e.g., Headteacher and Deputy Headteacher positions, and administrative and estates staff, it is expected that there would be a reduction in the number of roles required overall.

The proposed formal closure of Allensbank Primary School and Gladstone Primary School, and the establishment of a new two form entry primary school places staff at a potential risk of redundancy which would need to be managed in line with the School Redeployment and Redundancy Policy

A key aspiration for the Council is to achieve staff reductions as far as possible through redeployment rather than voluntary or compulsory redundancies. Therefore, the Council is committed to maximising opportunities for school staff to secure employment in other schools in Cardiff through redeployment into vacancies in other schools in Cardiff.

The redeployment arrangements would also be taken into account should the decision be taken to relocate the Speech and Language class from Allensbank Primary School to within the remit of a Governing Body of another school.

The establishment of a new school would require the setting up of a temporary Governing Body to oversee the development of an appropriate staffing structure and appointments to this.

Any decisions taken with regards to staffing would be a matter for the relevant Governing Body.

The proposed increase in pupil numbers arising from the introduction of a nursery at St Monica's Primary School would require the Governing Body and Senior Leadership Team to plan for workforce requirements of additional staffing.

Full support would be offered to the school staff and Governing Bodies by HR People Services throughout the reorganisation. This would involve attendance at consultation meetings, meetings with school staff where appropriate and the circulation of a Frequently Asked Questions document.

Funding to support the reorganisation of English-medium provision would be made available from Council resources. There would be no savings to the Council as a result of the proposed changes. Any efficiency savings arising out of a reduction in leadership and establishment costs would allow for funding to be allocated more effectively within the Education budget.

The school budget formula saving from amalgamating Allensbank Primary School and Gladstone Primary School by closing each school and creating a single two form entry primary school as set out in Option 1 would be approximately £98,000 per year. This is based on the removal of one of the lump sum allowances provided to schools city-wide.

This option, amalgamating Allensbank and Gladstone and combining their budget, would therefore allow for a redistribution of financial resources to schools city-wide through the reduction in the number of lump sum allocations to individual schools.

Should Option 1 be progressed, it is proposed that the equivalent sum would be ringfenced for the newly established two form entry English-medium for three years. This would support the school to further develop provision and/or invest in resources to benefit its pupils. Beyond this period, this sum would be available for redistribution to primary schools city-wide.

Option 1 would result in the displacement of an existing Headteacher and restructuring of leadership. The anticipated efficiencies in the new school's budget, compared to the two existing budgets combined, could be c£100,000 to £114,000 per year plus on-costs, based on the midpoint of existing leadership salary ranges and the implementation of a new leadership structure of one Headteacher and two Deputy Headteachers.

Welsh-medium

Proposals to relocate a school would require high levels of staff and trade union consultation, clear communication plans and arrangements for the transition from one school site to another. Staff involvement in the development of building specifications or designs should be secured.

The proposed expansion of Ysgol Mynydd Bychan would require the Governing Body to consider the workforce requirements in readiness for the expansion. The Governing Body would be encouraged to undertake this work in line with the School Organisation Planning HR Framework. HR People Services would provide advice, support and guidance to the Governing Body for the workforce planning process and consequential recruitment processes.

Where the Governing Body has adopted the Council's School Redeployment and Redundancy Policy, any new vacancies arising as a consequence of an increase in the numbers on roll would provide opportunities for any school-based staff on the school redeployment register.

The Council was successful in securing £1.8m grant funding from the Welsh Government to reorganise primary school provision in central Cardiff and expand Welsh medium places by one form of entry (210 places). The purpose of the Welsh Medium Capital Grant is to support capital investments that facilitate growth in Welsh-medium education and use of the Welsh language.

The funding allocated to Cardiff Council is ring-fenced to support expansion in Welsh-medium education provision and would allow for investment in school buildings to support increased intakes.

Transport/Travel to school

The Council has been committed to ensuring that every school in Cardiff has an Active Travel Plan by 2022. Such plans identify actions by the school to support and encourage active travel to school and identify any improvements to on-site and off-site infrastructure required to facilitate active journeys. The Council's Active Travel Plans officers have been working with schools to develop these and all four schools included in the proposed changes already have Active Travel Plans in place for their current sites.

All new (including reorganised) schools need to have an Active Travel Plan in place from the outset of their operation.

The Active Travel Plans officers will continue to work with the schools in the review and further development of their current Active Travel Plans as appropriate to suit any change in circumstances. They can support with engagement on the Active Travel Plans as part of an implementation of a proposed expansion of places and any changes in location of school cohorts to alternative sites.

Following a reorganisation of the schools, the Council would monitor conditions outside the schools post-completion to see if any further measures such as parking restrictions are required. The scope for introducing parking restrictions will be investigated and put in place where appropriate as a low-cost measure to help discourage short distance car travel, make the environment outside each school safer and more conducive to walking, scooting, and cycling and maximise active travel to school.

The Council's Road Safety Team already provides a programme of cycle and pedestrian training to further encourage take up of active travel to school. This support will continue as part of the ongoing engagement and support that will be provided by the Council's Schools Active Travel Team on Active Travel Plan development and delivery.

The construction of the new Cycleway 1.2 along Cathays Terrace, Whitchurch Road and Allensbank Road will provide a new cycling facility directly linking to the sites currently occupied by Allensbank Primary School, Gladstone Primary School and St Monica's Church in Wales Primary School.

Where it is identified that some pupils will be eligible for school transport due to their additional learning needs the facilities for drop-off and pick-up of pupils will be reviewed to identify any necessary improvements.

The maximum distances between the school sites is approximately 0.5 miles. Should any of the schools be relocated to an alternative site, the maximum increase in home to school travel distance for current pupils is therefore 0.5 miles.

The establishment of a new two form of entry English-medium primary school at the shared Gladstone Primary School / St Monica's CiW Primary School site would result in the current pupils of Allensbank Primary School having an increased journey. The impact on these pupils would be an average travel distance increase of 0.08 miles.

The impact of transferring St Monica's CiW Primary School to the Ysgol Mynydd Bychan would be an average travel distance increase of 0.2 miles for current pupils of St Monica's.

The impact of transferring Ysgol Mynydd Bychan to the Allensbank site would be an average travel distance increase of 0.04 miles for current pupils of Ysgol Mynydd Bychan.

Option 2 - Site Organisation



The Council is consulting on the following changes to English-medium community primary school provision:

- Co-locate Allensbank and Gladstone Primary Schools on a shared site:
 - o Transfer Allensbank Primary School to the current shared Gladstone Primary School / St Monica's CiW Primary School site
 - o *Reduce the capacity of Allensbank Primary School from 315 places (1.5 forms of entry) to 210 places (1 form of entry)
 - o Reduce the age range of Allensbank Primary School from 3-11 to 4-11 by discontinuing nursery provision at the school
 - o Increase the number of nursery places at Gladstone Primary School from 64 to 96

*Following consultation, the Published Admission Number for Allensbank Primary School was reduced to 30 places from 2022/2023. A reduction in the school capacity would align the school capacity and Published Admission Number.

This option would allow for further consideration to be given to collaboration / formal federation between Allensbank Primary School and Gladstone Primary School.

The Governing Body of St Monica's CiW Primary School is consulting on the following changes:

- Transfer St Monica's CiW Primary School to the current Ysgol Mynydd Bychan site and establish nursery provision at the school

The Council is consulting on the following changes to Welsh-medium community primary school provision:

- Transfer Ysgol Mynydd Bychan to the current Allensbank Primary School site
- Increase the capacity of Ysgol Mynydd Bychan from 192 places (0.9FE) to 420 places (2FE)
- Increase the number of nursery places at Ysgol Mynydd Bychan from 64 to 96

The proposed changes would be implemented from September 2025.

Admission to Primary Education

The current number of places at entry to primary education at Allensbank Primary School is 30 (one form of entry). The current number of places at entry to primary education at Gladstone Primary School is 30 (one form of entry). It is proposed that the number of places at each school would remain at 30 in September 2025.

The current number of primary school places at entry to primary education at St Monica's Church in Wales Primary School is 20 (0.7 form entry). It is proposed that the number of places would remain at 20 in September 2025.

The current number of primary school places at entry to primary education at Ysgol Mynydd Bychan is 30 (one form of entry). The number of primary school places at entry to primary education at Ysgol Mynydd Bychan from September 2025 would be 60 (two forms of entry).

Pupils on roll at each of the schools at the time of the changes (September 2025) would remain on that school's roll unless they wish to transfer to an alternative school.

Nursery Provision

At present the Council funds 112 community nursery places between Allensbank Primary School and Gladstone Primary School. The number funded is reducing to 96 places next year, to reflect demand. It is proposed to retain sufficient accommodation to allow for up to 96 English-medium community nursery places at the shared schools' site. These places would be provided at Gladstone Primary School.

Should the transfer of St Monica's Church in Wales Primary School to the current Ysgol Mynydd Bychan site be taken forward it is proposed that 32 part time nursery places are provided. This would develop continuity and progression in children's learning at the school from the age of three.

The number of nursery places at Ysgol Mynydd Bychan would be increased from 64 to 96 to support its growth to a two form entry school.

Overall, accommodation to allow for an increased number of English-medium and Welsh-medium nursery places would be retained. The number of places funded would reflect the demand for places in the local area, as at present.

Additional Learning Needs provision

There is a Speech and Language early intervention class hosted by Allensbank Primary School. The Council admits up to 8 Foundation Phase children to this city-wide provision who were not making sufficient progress, but who have good prospects for returning to their local mainstream school.

Placements last 1 – 3 years, depending on progress. Pupils are dual registered at their local school and supported to return to that school at the end of the placement. Pupils continue to attend their local school for at least one day a week, to maintain links with local friends and to prepare for a successful reintegration to their local school.

Consideration would be given to retaining the city-wide Speech & Language class within the relocated Allensbank Primary School.

Further consideration would be given to this in consultation with the relevant school Governing Body / bodies, taking account of each school aspirations.

The proposed expansion of Ysgol Mynydd Bychan to two forms of entry, and transfer to the Allensbank Primary School site could provide the opportunity for consideration to be given to the establishment of specialist resource base provision through the medium of Welsh. Separate proposals would have to be developed for this.

Operational considerations

The current Gladstone Primary School / St Monica's CiW Primary School site overall is capable of accommodating up to 420 pupils with nursery. However, as each school building could not accommodate 210 pupils each, the schools would have to work together to agree how the available accommodation could best be used to meet the operational requirements of both schools.

What are the benefits of the proposal?

The proposed changes would:

- ensure that each school provision offered meets the diverse needs of the communities they currently serve and are able to serve in the future
- support schools to be financially sustainable in an improved pattern of provision through collaboration/ federation
- provide an improved balance between the availability and take up of both Welsh-medium and English-medium primary school places
- support progress towards WESP and Cymraeg 2050 targets
- support Ysgol Mynydd Bychan to maintain and continue to build on its excellent standards
- allow for a greater number of children to benefit from the education on offer at Ysgol Mynydd Bychan
- result in fewer children being refused admission to a local school
- as a minimum maintain the current standards of education and allow each school to continue to improve education for all of their learners
- maintain the current number of English-medium primary school places serving the local area
- allow for the establishment of nursery provision at St Monica's CiW Primary School and the associated benefits
- allow for the retention of school sites to future proof against changes in the population cycle

The establishment of nursery provision at St Monica's Church in Wales Primary School would:

- provide continuity of provision which reflects the ethos and culture of the school
- support the development of strong and effective parental links with the school from the earliest possible opportunity
- ease transition for a nursery-aged child when promoting to Reception class (where Reception admission application has been successful)
- allow for the early identification of vulnerable groups. This will mean that the needs of children can be identified as early as possible
- provide an opportunity for children to attend nursery at the same site as their older siblings. This should impact positively on parents' time and reduce the logistical difficulties that seeking an alternative childcare provision may cause
- provide continuity and progression between Early Years and Foundation Phase, enhancing the opportunity to appropriately address individual developmental and cultural needs

The expansion of Ysgol Mynydd Bychan to two forms of entry would support teaching and learning by allowing for:

- the school to increase to two forms of entry. When compared with smaller schools, the scale of a two form entry primary school permits greater flexibility and opportunity for pupils due to an extended, more enhanced and secure financial resource base
- a two form entry school can provide a greater degree of stability at all levels of leadership including maintaining a full and stable complement of school governors
- the ability to employ more teaching and support staff would allow the two form entry schools to cover a wider range of curriculum expertise
- a greater number of teachers to share workload
- greater opportunities to professionally develop staff e.g. newly qualified teachers who can observe their parallel teacher
- opportunities for staff to teach to their strengths ensuring learners have the best education experience possible
- a greater number to teachers to lead on Areas of Learning, plus religious Education, Relationship and Sexuality Education (RSE) and Digital Competency
- greater opportunities to offer a broader range of extra-curricular/enrichment activities
- greater opportunities for distributed leadership

Potential Federation or collaboration of Allensbank Primary School and Gladstone Primary School

If this option were progressed, the co-location of Allensbank Primary School and Gladstone Primary School on a shared site would provide opportunities for the schools to work in partnership to maximise opportunities for all pupils either through collaboration or federation.

Should the schools consider implementing a formal collaboration or federation this would be led by the Governing Bodies and supported by the Council.

If progressed, formal collaboration or federation could:

- support raising standards by sharing curriculum delivery, school leadership and joint action to tackle key issues such as inclusion
- allow for the sharing of good practice, preparation materials and resources
- enhance opportunities for pupil activities leading to improvements to the quality of learning for staff and pupils
- enhance opportunities for staff professional development
- increase opportunities for middle management development

- provide School Council and pupil development opportunities
- improved social opportunities for pupils
- allow for cross phase arrangements
- allow for streamlining of policies and structures
- support school improvement by enabling schools to draw on the resources of other schools to tackle problems, share expertise, raise expectations and address the needs of particular groups of pupils.
- provide opportunities to exploit economies of scale and sharing services across the schools
- allow for the possible easier recruitment of governors with fewer governor vacancies.
- allow for sharing of expertise and resources
- facilitate the organisation of professional development
- ease arrangement of joint pupil activities

However, the extent to which the Governing Bodies of Allensbank Primary School and Gladstone Primary School progress with federation / collaboration would be a later consideration by these Governing Bodies.

Standards

The Council works closely with the Governing Bodies of schools to make sure that standards in schools are high, that teaching is good, and that leadership and governance is strong.

The standards at the four schools included in the proposed changes are good.

The proposed expansion of Ysgol Mynydd Bychan to two forms of entry and the establishment of nursery provision at St Monica's CiW Primary School provides the opportunity to realise a range of educational benefits that would allow for these two schools to build on existing progress ensuring a positive impact on the quality and standards of education for current and future pupils.

Maintaining Allensbank Primary School and Gladstone Primary School as two separate schools would not allow for the benefits of a two-form entry school to be realised. It would also not allow for in the formula funding that would be released in Option 1 to be made available for ring-fencing to the schools, nor for distribution to schools' city wide through the funding formula. Compared to Option 1, there would be fewer financial resources to support each school to further develop provision and/ or invest in resources to benefit its pupils, and to maintain and improve standards.

Should the Governing Bodies of Allensbank Primary School and Gladstone Primary School agree to implementation of collaborative/formal federation arrangements, a number of the educational benefits identified could be realised.

Potential disadvantages of the proposals

Compared to the current arrangements, there is potential for increased traffic congestion around the current Allensbank Primary School site and the current shared Gladstone Primary/St Monica's CiW Primary School site at the start and end of the school day. However, the Council would work with the Governing Bodies of the schools to develop a Travel Plan to minimise any potential disruption.

Compared to Option 1, the number of benefits realised for pupils in English-medium community education could be reduced as there would be a less efficient use of the schools' budgets. There would be no lump-sum funding ringfenced to provide support for a period. A greater proportion of the two schools' budgets would be required for leadership and management, than in a single two form entry school.

Risks

- there is a risk that there will be a rise in demand for English-medium places. However, the Council will monitor demand over the coming years to ensure that there are sufficient places for those requiring English-medium education. As the proposals retain all existing sites and do not reduce accommodation available, they would retain flexibility for future changes that may be identified as appropriate.
- the Governing Bodies of Allensbank Primary School and Gladstone Primary School may decide not to proceed with collaborative working or federation.
- there is a risk that an increase in the number of pupils who wish to take up Welsh-medium places does not happen. The Council will keep its projections under review and would respond to any such changes in demand if required.
- There is a potential impact on the take up of places at neighbouring Welsh-medium schools. However, this is expected to be short term as the number of pupils attending Welsh-medium provision is targeted to grow as part of the development of the Welsh in Education Strategic Plan (WESP).
- There is a risk of potential disruption to pupils during the transition period whilst building /refurbishment works are undertaken. However, the Council has significant experience in the successful delivery of building projects on the sites of occupied schools as a result of progressing a large and growing school organisation programme. Any building work carried out would be managed effectively in consultation with the schools to ensure the full curriculum continues to be delivered and that high education standards and safety standards are maintained.

Human Resources and Finance Matters

English-medium

Proposals to relocate a school would require high levels of staff and trade union consultation, clear communication plans and arrangements for the transition from one school site to another. Staff involvement in the development of building specifications or designs should be secured.

Option 2 would allow for the Governing Bodies of Allensbank Primary School and Gladstone Primary School to consider collaborative working or the establishment of a formal federation.

Federation could result in a reduction in the number of leadership roles overall across the two schools depending on the model taken forward.

Any decisions taken with regards to staffing would be a matter for the relevant Governing Body.

The proposed increase in pupil numbers arising from the introduction of a nursery at St Monica's Primary School would require the Governing Body and Senior Leadership Team to plan for workforce requirements of additional staffing.

Funding to support the reorganisation of English-medium provision would be made available from Council resources. There would be no savings to the Council as a result of the proposed changes. Any efficiency savings arising out of a formal federation would allow for funding to be allocated more effectively within the Education budget.

The Governing Bodies, or single Governing Body if federated, could identify efficiencies in leadership, staffing or fixed costs due to sharing of a site.

Proposals to locate Allensbank and Gladstone (Option 2) on a single shared site, but as separate schools, could also result in the displacement of an existing Headteacher and restructuring of leadership, should the Governing Bodies decide to federate and seek to proceed with this.

Federations of one form entry schools in Cardiff have implemented differing leadership structures; however, the anticipated salary efficiencies in the school's budget, compared to the two existing budgets combined, could be between c£43,000 and c£77,000 per year plus on-costs, depending on the new leadership structure implemented.

This would provide a less costly leadership structure overseeing the English-medium provision than current arrangements. However, the formula funding to these schools is c£98,000 greater each year, compared to amalgamation, as each school would still receive lump sum allocations. There is no greater cost to the Council overall, but this sum would not be available for ring-fencing to the schools nor for distribution to schools city-wide through the funding formula as per Option 1.

Welsh-medium

Proposals to relocate a school would require high levels of staff and trade union consultation, clear communication plans and arrangements for the transition from one school site to another. Staff involvement in the development of building specifications or designs should be secured.

The proposed expansion of Ysgol Mynydd Bychan would require the Governing Body to consider the workforce requirements in readiness for the expansion. The Governing Body would be encouraged to undertake this work in line with the School Organisation Planning HR Framework. HR People Services would provide advice, support and guidance to the Governing Body for the workforce planning process and consequential recruitment processes.

Where the Governing Body has adopted the Council's School Redeployment and Redundancy Policy, any new vacancies arising as a consequence of an increase in the numbers on roll would provide opportunities for any school-based staff on the school redeployment register.

The Council was successful in securing £1.8m grant funding from the Welsh Government to reorganise primary school provision in central Cardiff and expand Welsh medium places by one form of entry (210 places). The purpose of the Welsh Medium Capital Grant is to support capital investments that facilitate growth in Welsh-medium education and use of the Welsh language.

The funding allocated to Cardiff Council is ring-fenced to support expansion in Welsh-medium education provision and would allow for investment in school buildings to support increased intakes.

Transport/Travel to school

The Council has been committed to ensuring that every school in Cardiff has an Active Travel Plan by 2022. Such plans identify actions by the school to support and encourage active travel to school and identify any improvements to on-site and off-site infrastructure required to facilitate active journeys. The Council's Active Travel Plan officers have been working with schools to develop these and all four schools already have Active Travel Plans in place for their current sites.

All new (including reorganised) schools need to have an Active Travel Plan in place from the outset of their operation.

The Active Travel Plans officers will continue to work with the schools in the review and further development of their current Active Travel Plans as appropriate to suit any change in circumstances. They can support with engagement on the Active Travel Plans as part of an implementation of a proposed expansion of places and any changes in location of school cohorts to alternative sites.

Following a reorganisation of the schools, the Council will monitor conditions outside the schools post-completion to see if any further measures such as parking restrictions are required. The scope for introducing parking restrictions will be investigated and put in place where appropriate as a low-cost measure to help discourage short distance car travel, make the environment outside each school safer and more conducive to walking, scooting and cycling and maximise active travel to school.

The Council's Road Safety Team already provides a programme of cycle and pedestrian training to further encourage take up of active travel to school. This support will continue as part of the ongoing engagement and support that will be provided by the Council's Schools Active Travel Team on Active Travel Plan development and delivery.

The construction of the new Cycleway 1.2 along Cathays Terrace, Whitchurch Road and Allensbank Road will provide a new cycling facility directly linking to Allensbank Primary School, Gladstone Primary School and St Monica's Church in Wales Primary School.

Where it is identified that some pupils will be eligible for school transport due to their additional learning needs the facilities for drop-off and pick-up of pupils will be reviewed to identify any necessary improvements.

The maximum distances between the school sites is c0.5 miles. Should any of the schools be relocated on to an alternative site, the maximum increase in home to school travel distance for current pupils is therefore 0.5 miles.

Transferring Allensbank Primary School to the shared Gladstone Primary School / St Monica's CiW Primary school site would result in the current pupils of Allensbank Primary School having an increased journey averaging 0.08 miles. The impact on these pupils would be an average travel distance increase of 0.08 miles.

The impact of transferring St Monica's Church in Wales Primary School to the Ysgol Mynydd Bychan site would be an average travel distance increase for pupils of 0.2 miles.

The impact of transferring Ysgol Mynydd Bychan to the Allensbank Primary School site would be an average travel distance increase of 0.04 miles for current pupils of Ysgol Mynydd Bychan.

Option 3 - Site Organisation



The Council is consulting on the following changes to English-medium community primary school provision:

- Transfer Allensbank Primary School to the current Ysgol Mynydd Bychan site
- Reduce the capacity of Allensbank Primary School from 315 places (1.5 forms of entry) to 192 places (0.9 form entry)

This option would allow for further consideration to be given to formal federation / collaboration between Allensbank Primary School and Gladstone Primary School.

The Council is consulting on the following changes to Welsh-medium community primary school provision:

- Transfer Ysgol Mynydd Bychan to the current Allensbank Primary School site
- Increase the capacity of Ysgol Mynydd Bychan from 192 places (0.9 form entry) to 420 places (2FE)
- Increase the number of nursery places at Ysgol Mynydd Bychan from 64 to 96

The proposed changes would be implemented from September 2025.

Under this option, there are no changes proposed to Gladstone Primary School nor to St Monica's Church in Wales Primary School.

Admission to Primary Education

The current number of places at entry to primary education at Allensbank Primary School is 30 (one form of entry). The number of primary school places at entry to primary education at Allensbank Primary School from September 2025 would reduce to 27 (0.9 form entry).

The current number of primary school places at entry to primary education at Ysgol Mynydd Bychan is 30 (one form of entry). The number of primary school places at entry to primary education at Ysgol Mynydd Bychan from September 2025 would be 60 (two forms of entry).

Pupils on roll at each of the schools at the time of the changes (September 2025) would remain on that school's roll unless they wish to transfer to an alternative school.

Nursery Provision

There would be no change to the number of nursery places at Allensbank Primary school. The school is currently funded for 48 nursery places, reducing to 32 next year.

The number of nursery places at Ysgol Mynydd Bychan would be increased from 64 to 96 to support its growth to a two-form entry school.

Additional Learning Needs provision

There is a Speech and Language early intervention class hosted by Allensbank Primary School. The Council admits up to 8 Foundation Phase children to this city-wide provision who were not making sufficient progress, but who have good prospects for returning to their local mainstream school.

Placements last 1 – 3 years, depending on progress. Pupils are dual registered at their local school and supported to return to that school at the end of the placement. Pupils continue to attend their local school for at least one day a week, to maintain links with local friends and to prepare for a successful reintegration to their local school.

Consideration would be given to the relocation of the city-wide Speech and Language class hosted by Allensbank Primary School should Option 3 be progressed.

What are the benefits of the proposal?

The proposed changes would:

- ensure that each school provision offered meets the diverse needs of the communities they currently serve and are able to serve in the future
- support schools to be financially sustainable in an improved pattern of provision through collaboration/federation
- provide an improved balance between the availability and take up of both Welsh-medium and English-medium primary school places
- support progress towards the Welsh in Education Strategic Plan (WESP) and Cymraeg 2050 targets
- support Ysgol Mynydd Bychan to maintain and continue to build on its excellent standards
- allow for a greater number of children to benefit from the education on offer at Ysgol Mynydd Bychan
- result in fewer children being refused admission to a local school
- as a minimum maintain the current standards of education
- allow for the retention of school sites to future proof against changes in the population cycle

The expansion of Ysgol Mynydd Bychan to two forms of entry would support teaching and learning by allowing for:

- the school to increase to two forms of entry. When compared with smaller schools, the scale of a two form entry primary school permits greater flexibility and opportunity for pupils due to an extended, more enhanced and secure financial resource base
- a two form entry school can provide a greater degree of stability at all levels of leadership including maintaining a full and stable complement of school governors
- the ability to employ more teaching and support staff would allow the two form entry schools to cover a wider range of curriculum expertise
- a greater number of teachers to share workload
- greater opportunities to professionally develop staff e.g. newly qualified teachers who can observe their parallel teacher
- opportunities for staff to teach to their strengths ensuring learners have the best education experience possible
- a greater number to teachers to lead on Areas of Learning, plus Religious Education, Relationship and Sexuality Education (RSE) and Digital Competency
- greater opportunities to offer a broader range of extra-curricular/enrichment activities
- greater opportunities for distributed leadership

Potential Federation or collaboration of Allensbank Primary School and Gladstone Primary School

If this option were progressed, the close proximity of Allensbank Primary School and Gladstone Primary School provides opportunities for the schools to work in partnership to maximise opportunities for all pupils either through collaboration or federation.

Should the schools consider implementing a formal collaboration or federation this would be led by the Governing Bodies and supported by the Council.

If progressed, formal collaboration or federation could:

- support raising standards by sharing curriculum delivery, school leadership and joint action to tackle key issues such as inclusion
- allow for the sharing of good practice, preparation materials and resources
- enhance opportunities for pupil activities leading to improvements to the quality of learning for staff and pupils
- enhance opportunities for staff professional development
- increase opportunities for middle management development
- provide School Council and pupil development opportunities
- improved social opportunities for pupils
- allow for cross phase arrangements
- allow for streamlining of policies and structures
- support school improvement by enabling schools to draw on the resources of other schools to tackle problems, share expertise, raise expectations and address the needs of particular groups of pupils.
- provide opportunities to exploit economies of scale and sharing services across the schools
- allow for the possible easier recruitment of governors with fewer governor vacancies.
- allow for sharing of expertise and resources
- facilitate organisation of professional development
- ease arrangement of joint pupil activities

However, the extent to which the Governing Bodies of Allensbank Primary School and Gladstone Primary School progress with Federation / collaboration would be a later consideration by these Governing Bodies.

Standards

The Council works closely with the Governing Bodies of schools to make sure that standards in schools are high, that teaching is good, and that leadership and governance is strong.

The standards at the four schools included in the proposed changes are good.

The proposed expansion of Ysgol Mynydd Bychan to two forms of entry provides the opportunity to realise a range of educational benefits that would allow for the school to build on existing progress ensuring a positive impact on the quality and standards of education for current and future pupils.

The proposal would not however allow for the establishment of nursery provision at St Monica's CiW Primary School and the associated benefits.

Maintaining Allensbank Primary School and Gladstone Primary School as two separate schools would not allow for the benefits of a two form entry school to be realised. It would also not allow for in the formula funding that would be released in Option 1 to be made available for ring-fencing to the schools, nor for distribution to schools' city wide through the funding formula. Compared to Option 1, there would be fewer financial resources to support the school to further develop provision and/ or invest in resources to benefit its pupils, and to maintain and improve standards.

Should the Governing Bodies of Allensbank Primary School and Gladstone Primary School agree to implementation of collaborative/formal federation arrangements, a number of the educational benefits identified could be realised.

Potential disadvantages of the proposal

- Compared to the current arrangements, there is potential for increased traffic congestion around the current Allensbank Primary School site at the start and end of the school day. However, the Council would work with the Governing Body of the school to develop a Travel Plan to minimise any potential disruption.
- the proposal to reduce the capacity of Allensbank Primary School would result in a marginal reduction in the number of English-medium community primary school places.
- Compared to Option 1, the number of benefits realised for pupils in English-medium community education could be reduced as there would be a less efficient use of the schools' budgets. There would be no lump-sum funding ringfenced to provide support for a period. A greater proportion of schools' budgets would be required for leadership and management, than in a single two form entry school.
- The transfer of Allensbank Primary School to a smaller building would require the relocation of the Speech and Language Class to another school.

Risks

- there is a risk that there will be a rise in demand for English-medium places. However, the Council will monitor demand over the coming years to ensure that there are sufficient places for those requiring English-medium education. As the proposals retain all existing sites and do not reduce accommodation available, they would retain flexibility for future changes that may be identified as appropriate.
- the Governing Bodies of Allensbank Primary School and Gladstone Primary School may decide not to proceed with collaborative working or federation.
- there is a risk that an increase in the number of pupils who wish to take up Welsh-medium places does not happen. The Council will keep its projections under review and would respond to any such changes in demand if required.
- There is a potential impact on the take up of places at neighbouring Welsh-medium schools. However, this is expected to be short term as the number of pupils attending Welsh-medium provision is targeted to grow as part of the development of the Welsh in Education Strategic Plan (WESP).
- There is a risk of potential disruption to pupils during the transition period whilst building /refurbishment works are undertaken. However, the Council has significant experience in the successful delivery of building projects on the sites of occupied schools as a result of progressing a large and growing school organisation programme. Any building work carried out would be managed effectively in consultation with the schools to ensure the full curriculum continues to be delivered and that high education standards and safety standards are maintained.

Human Resources and Finance Matters

English-medium

Proposals to relocate a school would require high levels of staff and trade union consultation, clear communication plans and arrangements for the transition from one school site to another. Staff involvement in the development of building specifications or designs should be secured.

This option would allow for the Governing Bodies of Allensbank Primary School and Gladstone Primary school to consider collaborative working or the establishment of a formal federation.

Federation could result in a reduction in the number of leadership roles overall across the two schools depending on the model taken forward.

Any decisions taken with regards to staffing would be a matter for the relevant Governing Body.

Funding to support the reorganisation of English-medium provision would be made available from Council resources. There would be no savings to the Council as a result of the proposed changes. Any efficiency savings arising out of a formal federation would allow for funding to be allocated more effectively within the Education budget.

The proposal to transfer Ysgol Mynydd Bychan to the Allensbank site, and to transfer Allensbank to the Ysgol Mynydd Bychan site would not result in the displacement of an existing Headteacher and restructuring of leadership although this could be considered at a later stage by the Governing Body. Should the Governing Body pursue a federation in future, the federated schools could reduce leadership costs by c£43,000 and c£77,000 per year plus on costs.

The formula funding to these schools is £98,000 greater each year, compared to amalgamation of Allensbank and Gladstone in Option 1, as each school would still receive lump sum allocations. These lump sums would not be available for ring-fencing to the schools nor for distribution to schools city-wide through the funding formula as per Option 1.

Welsh-medium

Proposals to relocate a school would require high levels of staff and trade union consultation, clear communication plans and arrangements for the transition from one school site to another. Staff involvement in the development of building specifications or designs should be secured.

The proposed expansion of Ysgol Mynydd Bychan would require the Governing Body to consider the workforce requirements in readiness for the expansion. The Governing Body would be encouraged to undertake this work in line with the School Organisation Planning HR Framework. HR People Services would provide advice, support and guidance to the Governing Body for the workforce planning process and consequential recruitment processes.

Where the Governing Body has adopted the Council's School Redeployment and Redundancy Policy, any new vacancies arising as a consequence of an increase in the numbers on roll would provide opportunities for any school-based staff on the school redeployment register.

The Council was successful in securing £1.8m grant funding from the Welsh Government to reorganise primary school provision in central Cardiff and expand Welsh medium places by one form of entry (210 places). The purpose of the Welsh Medium Capital Grant is to support capital investments that facilitate growth in Welsh-medium education and use of the Welsh language.

The funding allocated to Cardiff Council is ring-fenced to support expansion in Welsh-medium education provision and would allow for investment in school buildings to support increased intakes.

Transport/Travel to school

The Council has been committed to ensuring that every school in Cardiff has an Active Travel Plan by 2022. Such plans identify actions by the school to support and encourage active travel to school and identify any improvements to on-site and off-site infrastructure required to facilitate active journeys. The Council's Active Travel Plan officers have been working with schools to develop these and all four schools already have Active Travel Plans in place for their current sites.

All new (including reorganised) schools need to have an Active Travel Plan in place from the outset of their operation.

The Active Travel Plans officers will continue to work with the schools in the review and further development of their current Active Travel Plans as appropriate to suit any change in circumstances. They can support with engagement on the Active Travel Plans as part of an implementation of a proposed expansion of places and any changes in location of school cohorts to alternative sites.

Following a reorganisation of the schools, the Council will monitor conditions outside the schools post-completion to see if any further measures such as parking restrictions are required. The scope for introducing parking restrictions will be investigated and put in place where appropriate as a low-cost measure to help discourage short distance car travel, make the environment outside each school safer and more conducive to walking, scooting and cycling and maximise active travel to school.

The Council's Road Safety Team already provides a programme of cycle and pedestrian training to further encourage take up of active travel to school. This support will continue as part of the ongoing engagement and support that will be provided by the Council's Schools Active Travel Team on Active Travel Plan development and delivery.

The construction of the new Cycleway 1.2 along Cathays Terrace, Whitchurch Road and Allensbank Road will provide a new cycling facility directly linking to Allensbank Primary School, Gladstone Primary School and St Monica's Church in Wales Primary School.

Where it is identified that some pupils will be eligible for school transport due to their additional learning needs the facilities for drop-off and pick-up of pupils will be reviewed to identify any necessary improvements.

The maximum distances between the school sites is c0.5 miles. Should the schools exchange sites the maximum increase in home to school travel distance is therefore 0.5 miles.

The impact of transferring Allensbank Primary School to the Ysgol Mynydd Bychan site would be an average travel distance increase of 0.04 miles for current pupils of Allensbank.

The impact of transferring Ysgol Mynydd Bychan to the Allensbank Primary School site would be an average travel distance increase of 0.04 miles for current pupils of Ysgol Mynydd Bychan.

Information Relevant to all Options

Diversity of school communities

Analysis of school census data (PLASC) confirms that, at present, there are significant differences in the demographic data between some of the schools in the area.

It is notable that the home addresses of pupils enrolled at Ysgol Mynydd Bychan are clustered around the school sites of Ysgol Mynydd Bychan and Allensbank Primary School. The majority of Allensbank Primary School pupils live within the same area, with home addresses also clustered around the school sites of Ysgol Mynydd Bychan and Allensbank Primary School. However, demographic data for those pupils and for the school overall is very different to that of Ysgol Mynydd Bychan.

Demographic data also differs greatly between Ysgol Mynydd Bychan and other English-medium schools serving the area. These datasets include:

- Pupil mobility (how many children transfer into and out of a school)
- Eligibility of pupils for Free School Meals
- Home language
- Acquired level of competency in English or Welsh, and
- Ethnicity

Proposals must consider the disparity in demographic data but must also consider the ability of those applicants who move to the area to equitably access school places in each language medium.

The Equality Act 2010 places a duty on public services to advance equality of opportunity between persons who share a relevant protected characteristic and persons who do not share it. The Council must therefore ensure, when bringing forward proposals and following implementation of proposals, that each of the schools is supported to meet the diverse needs of the communities in which they are located. Proposals must support each school to be able to advance equality of opportunities for all families in the area.

The Council's adopted Welsh in Education Strategic Plan 2022-2032 sets specific targets and identifies priority workstreams for the Council and partners such as schools. This includes a research pilot initiative with Bilingual Cardiff, parental surveys, and focus groups to better understand the reasons for the low take-up of Welsh-medium places within specific under-represented groups and communities (including Black, Asian and Minority Ethnic), alongside bespoke promotions. This work is underway.

The proposed changes seek to provide an appropriate balance whereby each school type is available to all groups and each school is supported to be accessible, and to be seen to be accessible, to all groups.

The work underway to better understand parental preferences and take up of places in each community, alongside improving visibility of language medium and immersion opportunities available, will directly target decreasing the disparities between demographic data in English-medium and Welsh-medium schools.

How would pupil mobility be affected?

Pupil mobility refers to the percentage of children enrolled in a school who transfer in or out of the school in a defined period of time. Some schools have a far greater turnover of pupils than other schools for a variety of reasons.

Pupil mobility data for Ysgol Mynydd Bychan is very low (1.3% per year on average in the past three years), which in part reflects the oversubscription of the school at entry to Reception class. Each of the English-medium schools exceeds 10% pupil mobility each year and Allensbank Primary School has reported “Pupil mobility levels of up to 40% across a single academic year” during the past consultation on proposals.

| Table 17: Demographic data - Mobility of Reception to Year 6 school pupils | |
|--|--|
| School | Pupils not promoting to next year group in school (3-year average) |
| Allensbank Primary School | 15.2% |
| Gladstone Primary School | 21.9% |
| St Monica’s CiW Primary School | 21.1% |
| Ysgol Mynydd Bychan | 1.3% |

At present, families who move into the area after the closing date for entry to Reception class are usually unable to gain admission to Ysgol Mynydd Bychan and an alternative Welsh-medium school may be a significant distance from the home address of those families.

The proposed changes improve the ability of those applicants who move to the area to equitably access school places in each language medium. The priority workstreams identified in the Council’s WESP also seek to address the disparity in demographic data between Welsh-medium and English-medium schools. These changes are expected to reduce the disparity in the pupil mobility data between Ysgol Mynydd Bychan and its neighbouring English-medium primary schools.

How would pupils receiving Free School Meals be affected?

Some of the funding that a school receives is based on the number of pupils in the school who receive Free School Meals. All schools in Cardiff would receive funding for these pupils.

Table 18 below summarises the percentage of pupils, in Reception to Year 6 inclusive, in receipt of free school meals at each school. This is recorded within school census data (PLASC) as eligibility for free school meals (eFSM).

| Table 18: Demographic data - Reception to Year 6 pupils eligible for free school meals | |
|--|-----------------------------------|
| School | Eligibility for FSM (pupils as %) |
| Allensbank Primary School | 37.8% |
| Gladstone Primary School | 29.5% |
| St Monica’s CiW Primary School | 42.8% |
| Ysgol Mynydd Bychan | 5.4% |
| Combined Allensbank and Gladstone | 33.9% |

The standards at the four schools where changes are proposed are good.

There is no information available that suggests that the proposals would have a negative effect on pupils who receive Free School Meals.

How would pupils with English as an Additional Language be affected?

Each of the English-medium schools where changes are proposed has a greater proportion of pupils for whom English is not their home language than the city-wide average of 26.2%.

Ysgol Mynydd Bychan has a significantly lower proportion of pupils for whom English is not their home language than the city-wide average.

Pupils that receive support because they have English as an additional language can be supported in any school in Cardiff.

Table 19 below details the demographic populations of schools in terms of the language spoken at home, and the pupils' competency in spoken English where English is regarded as an additional language (EAL). The percentages are quantified in terms of pupils who are categorised as regarded as needing additional support (new to English to developing competency, categories A to C), whilst the remaining children in categories D and E are categorised as 'competent' and 'fluent' respectively.

Table 19: Demographic data - Home language of Reception to Year 6 school pupils
Source: PLASC 2022

| School | Number on roll | Home language English or Welsh | Home language not recorded | Home language not English or Welsh | No. of Home languages | EAL: A-C ('New to English' to 'developing competency') |
|--------------------------------|----------------|--------------------------------|----------------------------|------------------------------------|-----------------------|--|
| Allensbank Primary School | 193 | 78 | 10 | 105 (54%) | 31 | 97 (50%) |
| Gladstone Primary School | 173 | 66 | 3 | 104 (60%) | 31 | 82 (47%) |
| St Monica's CiW Primary School | 138 | 42 | 0 | 95 (69%) | 33 | 90 (65%) |
| Ysgol Mynydd Bychan | 203 | 201 | 0 | 2 (1%) | 3 | 0 (0%) |

The standards at the four schools included in the proposed changes are good.

There is no information available that suggests that the proposals would have a negative effect on how children with English as an additional language are supported. All schools in Cardiff would continue to provide support that is appropriate to the individual needs of each pupil.

The priority workstreams identified in the Council's WESP also seek to address the disparity in demographic data between Welsh-medium and English-medium schools. These changes are expected to reduce the disparity in the home languages of learners enrolled at Ysgol Mynydd Bychan and its neighbouring English-medium primary schools.

How would Minority Ethnic pupils be affected?

Table 20 below summarises ethnicity data captured in school census data (PLASC). This data varies between schools and has been summarised to White British and non-White British, and the number of ethnicities, to be more clearly represented. There are significant differences between the populations at Ysgol Mynydd Bychan and local English-medium schools.

| Table 20: Demographic data – Ethnicity of Reception to Year 6 school pupils Source: PLASC 2022 | | | | |
|--|--------------------------|---------------|-------------------|-----------------------|
| School | Number of pupils on roll | White British | Non-White British | Number of ethnicities |
| Albany Primary School | 378 | 17.2 % | 82.8 % | 53 |
| Allensbank Primary School | 193 | 21.2 % | 78.8 % | 45 |
| Gladstone Primary School | 173 | 20.8 % | 79.2 % | 37 |
| St Monica's CiW Primary School | 138 | 18.8 % | 81.2 % | 28 |
| Ysgol Mynydd Bychan | 203 | 91.1 % | 8.9 % | 11 |

The standards at the four schools included in the proposed changes are good.

There is also no information available that suggests that the proposals would have a negative effect on provision for any ethnic group.

The priority workstreams identified in the Council's WESP also seek to address the disparity in demographic data between Welsh-medium and English-medium schools. These changes are expected to reduce the disparity in the ethnicity data of learners enrolled at Ysgol Mynydd Bychan and its neighbouring English-medium primary schools.

How would support for pupils with Additional Learning Needs be affected?

A child has special educational needs if they have a learning difficulty which requires special educational provision to be made for them. A learning difficulty means that the child has significantly greater difficulty in learning than most children of the same age or that the child has a disability that needs different educational facilities from those that the school generally provides for children.

The Additional Learning Needs Code for Wales 2021 (the ALN Code) and regulations came into force on 1 September 2021 to ensure children and young people can access additional support to meet their needs that is properly planned for and protected, with learners at the heart of the process.

Children are moving from the special educational needs (SEN) system to the additional learning needs (ALN) system in groups over a 3-year period from September 2021, to ensure enough time for schools and local authorities to discuss the support needed and to prepare plans.

Table 21 below shows the percentage of pupils with Additional Learning Needs at each of the schools where changes are proposed in 2022 (PLASC 2022).

| Table 21 | | | | |
|--------------------------------|------------------------------|-----------------------------------|-------------------------------------|-------------------------|
| School | % of Pupils on School Action | % of Pupils on School Action Plus | % of Pupils with a statement of ALN | % of pupils with an IDP |
| Allensbank Primary School | 4.1 % | 5.2 % | 2.6 % | 1.6 % |
| Gladstone Primary School | 1.7 % | 0.0 % | 1.2 % | 3.5 % |
| St Monica's CiW Primary School | 0.7 % | 5.1 % | 0.7 % | 0.0 % |
| Ysgol Mynydd Bychan | 0.0 % | 0.0 % | 1.0 % | 0.0 % |

There is no information available that suggests that the proposals would have a negative effect on pupils with Additional Learning Needs. There is no proposed reduction to the support available for pupils with Additional Learning Needs.

There is a Speech and Language early intervention class hosted by Allensbank Primary School. The Council admits up to 8 Foundation Phase children to this city-wide provision who were not making sufficient progress, but who have good prospects for returning to their local mainstream school.

Placements last 1 – 3 years, depending on progress. Pupils are dual registered at their local school and supported to return to that school at the end of the placement. Pupils continue to attend their local school for at least one day a week, to maintain links with local friends and to prepare for a successful early reintegration to their local school.

Consideration would be given to the future location of the city-wide Speech & Language class, which could either be located at the site shared by Gladstone and St Monica's or could be located at another school.

The proposed expansion of Ysgol Mynydd Bychan to two forms of entry, and transfer to the Allensbank Primary School site could provide the opportunity for consideration to be given to the establishment of specialist resource base provision through the medium of Welsh. Separate proposals would have to be developed for this.

Governance Arrangements

In the event of Option 1 being taken forward, the governing bodies of Allensbank Primary School and Gladstone Primary School would be dissolved, and new governance arrangements put in place for the newly established two forms of entry English-medium primary school.

Under Options 2 and 3, there is an expectation that the two schools would work in partnership to maximise opportunities for all pupils at the schools. This could be achieved by informal or formal collaboration, or by formal federation. The Council and the Central South Consortium would provide support and guidance to each Governing Body to facilitate this.

The Governing Bodies of a number of schools in Cardiff have already formally federated or have agreed to formally collaborate.

Dissolution of Governing Bodies and establishment of a new Governing Body

A proposal to close two schools, and to establish a new school, would require the establishment of a temporary Governing Body ahead of the opening of the newly opened, larger school.

The most important reason for considering the amalgamation of two existing schools, by the establishment of a new school and closure of two existing schools, must be the benefits it would bring for children and young people in the existing schools by enhancing educational provision.

There are many clear operational benefits to larger schools, compared to smaller schools. The key governance aspects of establishing a single school, to replace two existing schools, are:

- Following determination of the proposed establishment of a new school, and closure of the existing schools, a new temporary governing body would be established. The new governing body would, in time, replace the individual governing bodies and would have responsibility for the strategic oversight and planning of the new school.
- The existing governing bodies of all schools would continue to operate, and retain their existing responsibilities, until the existing schools formally close.
- The new governing body would consider its name and would have responsibility for the budget and staff of the new school, and through a greater financial base have greater stability in its budget.

Overall, a larger school has a larger and more financially stable budget and is therefore able to implement a more efficient and effective leadership and staffing structure and exploit economies of scale. A larger school is more able to strengthen the overall education of pupils in the combined communities presently served by the two smaller schools.

A larger school also allows for:

- Greater opportunities for staff to share workload and expertise.
- Greater opportunities to professionally develop staff e.g., Newly Qualified Teachers who can observe their parallel teacher.
- A greater number of teachers to lead on Areas of Learning, plus Religious Education, Relationships and Sex Education and Digital Competency.
- The sharing of good practice, preparation materials and resources.

Federation

Federation is a formal and legal agreement by which a number of schools (between two and six) share governance arrangements and have a single governing body using the process set out in The Federation of Maintained Schools (Wales) Regulations 2014. Federations can involve a mix of maintained community and community special schools which are either nursery, primary or secondary schools.

Under Option 2, where the English-medium schools share a site, federation could be brought forward by the existing governing bodies. Federation could also be considered over separate sites, under Option 3, by the Governing Bodies.

To be successful, federation needs to be based on a commitment to work together and a willingness to do things differently for the added benefit of all pupils, their well-being and achievements. Experience from schools that have federated demonstrate that the development of all the schools and their communities within the federation and the sharing of best practice helps drive up standards and improve performance.

There are many reasons for federating. Schools generally use federation to build on informal partnerships already in place and to strengthen the overall education of pupils in their communities, however others have been approached by their LA to help a struggling school and small schools in danger of closure or unable to recruit high quality staff have federated to secure their future. The most important reason for considering federation must be the benefits it would bring for children and young people in the federating schools by enhancing educational provision.

One of the advantages of federation is that schools that federate keep their individual identity. However, the existing governing bodies are dissolved and replaced by a new, single governing body which has oversight of and equal responsibility for all schools within the federation.

There are clear benefits to federation for schools that are based either on the same site or in the same community as it enables them to work together on shared priorities, pool expertise, make better use of resources and explore ways of doing things more effectively. School federation is a formal way of implementing collaboration and promoting closer working relationships.

The key aspects of a federation are:

- The existing governing bodies of all schools would be dissolved if the proposals to establish a federation proceed following consultation. A new single governing body would replace the individual governing bodies and would have responsibility for the strategic oversight of all schools in the federation.
- Each school retains its name, category, budget and staff. Moving forward the schools would be able to explore the advantages of sharing resources.
- Each school would continue to have its own Estyn inspection, although these can be coordinated.

However, there are disbenefits of retaining two separate schools, in a federation, when compared to a single school, including a less efficient and effective leadership and staffing structure compared to a single larger school. As federated schools are less able to exploit economies of scale, than a single larger school, less of its resources are available to teaching and learning. There is a greater level of duplication of roles and services in two schools than in one. Whilst a federated governing body has responsibility for two separate school budgets, it is not able to pool this budget.

The process of federation may be led by a Local Authority or by the Governing Bodies of schools. As significant work is required before the consultation process begins, a realistic timescale for the federation process is between nine and twelve months.

Collaboration

Collaboration is where two or more governing bodies arrange for some of their functions to be discharged jointly under The Collaboration Between Maintained Schools (Wales) Regulation 2008. There are clear benefits to this arrangement for schools that are based either on the same site or in the same community as it enables them to work together on shared priorities, pool expertise, make better use of resources and explore ways of doing things more effectively.

However, there are disbenefits of retaining two separate schools in collaboration, when compared to a single school, including a less efficient and effective leadership and staffing structure compared to a single larger school. Such schools are less able to exploit economies of scale, than a single larger school, or federated schools, and less of their resources are available to teaching and learning. There is a greater level of duplication of roles and services in two schools, than in one school or in federated schools.

Schools already collaborate informally with other schools on key areas such as Curriculum for Wales, assessment procedures and transition arrangements. However, formal collaboration under the regulations results in more streamlined decision making which will benefit schools and make it more attractive to work together as it enables them to share, benchmark and develop good practices that individual schools may find difficult to sustain.

Some examples of the types of issues on which governing bodies could collaborate on are:

- Raising standards by sharing curriculum delivery, school leadership and joint action to tackle key issues such as inclusion.
- Continuing professional development opportunities.
- School Council and pupil development opportunities.
- Cross phase arrangements.
- Exploiting economies of scale and sharing services across the schools.

There are no timescales attached to forming a collaboration. Schools and governing bodies who decide to form a collaboration can do so by agreement at their respective governing body meetings. The collaborating governing bodies must form a joint committee to oversee the work of the collaboration. The collaborating governing bodies will also agree the joint committee's constitution, membership and terms of reference annually, along with any delegated powers.

How would standards in schools be affected by the changes?

Standards

The Council has made a clear commitment to continuing the investment in, and improvement of, Cardiff schools to make sure every child has the best possible start in life.

The Council works closely with the governing bodies of schools to make sure that standards in schools are high, that teaching is good and that leadership and governance is strong.

The Council does not expect the proposals to have any negative impact on the quality of standards of education, the delivery of the Foundation Phase or each key stage of education at any of the schools or the ALN provision based at Allensbank Primary School.

Teaching and learning experiences

The Council works closely with the governing bodies of schools to ensure that standards in schools are high, that teaching is good and that leadership and governance is strong.

The Council does not expect this proposal to have any negative impact on the quality of standards of education or the delivery of the Foundation Phase and Key Stage 2.

Care, support and guidance

All schools have a suitable range of policies and provision in place to promote pupils' health and wellbeing.

Schools are committed to fostering school communities in which learning is valued and pupils achieve their potential in a happy and safe environment in which they show respect and tolerance for others.

The Council would work with the leadership of each of the schools to make sure everyone at the school understands their responsibility for helping to improve and sustain care, support and guidance.

Leadership and Management

The Council would continue to work with the leadership of each of the schools to make sure everyone in the school understands their responsibility for helping to improve and sustain high performance. It would support the school to have good relationships with parents and other partners so that pupils receive a high-quality education.

The proposed changes would be planned carefully so that the schools leadership and governance are not disrupted, which could have a negative impact on educational outcomes.

How would secondary school provision be affected?

A proposal to expand and redevelop Cathays High School to meet demand from within its catchment and the wider area was agreed by Cabinet in October 2021 subject to further decisions including the Charity Commission's consent in relation to the Maindy site being held in a charitable trust.

Cathays High School presently serves a catchment area made up of the primary school catchment areas of Albany Primary School, Allensbank Primary School and Gladstone Primary School. This catchment area is less populated than other school catchment areas in Cardiff, some of which extend over a much greater geographical area and have pupil populations which are greater than their current or planned capacity.

Consultation on changes to English-medium community secondary school catchment areas would therefore be required at the appropriate time, in order to provide a suitable and sustainable balance in the supply of and take up of places.

The combined demand for places across the three Welsh-medium high school catchment areas is at a high level and can be accommodated within the existing school capacity.

Proposals to respond to changes in demand will be brought forward in good time to ensure that there are sufficient places to meet the demand for Welsh-medium places.



How would changes affect other schools?

Proposals brought forward must ensure that the growth of schools is sustainable, whilst the potential negative impact on other schools is minimised.

The expansion of Ysgol Mynydd Bychan to 2FE would enable an increase in the take up of places at the school.

As the overall pupil population in primary schools is expected to fall in coming years, an increase in the take up of places at Ysgol Mynydd Bychan would be expected to coincide with a reduced take up of places in English-medium schools.

Tables 22 and 23 below set out how the number of pupils enrolled at local schools may be affected by the proposed changes.

Table 22: Number of pupils enrolled at local schools if the proposals **were implemented from September 2025**

The figures for 2017/18 to 2021/22 are the recent number of pupils enrolled. The figures for 2022/23 to 2026/27 are the forecast number of pupils enrolled.

| Table 22: Number of pupils enrolled at local schools if the proposals were implemented from September 2023 | | | | | | | | | | |
|--|----------------------------------|---------------|---------------|---------------|---------------|------------------------------------|---------------|---------------|---------------|---------------|
| School | Recent number of pupils enrolled | | | | | Forecast number of pupils enrolled | | | | |
| | 2017/ 2018 | 2018/ 2019 | 2019/ 2020 | 2020/ 2021 | 2021/ 2022 | 2022/ 2023 | 2023/ 2024 | 2024/ 2025 | 2025/ 2026 | 2026/ 2027 |
| Albany Primary School | 371 | 365 | 393 | 383 | 378 | 373 | 366 | 359 | 354 | 348 |
| Allensbank Primary School | 202 | 204 | 185 | 190 | 193 | 195 | 205 | 204 | 200 | 198 |
| Gladstone Primary School | 178 | 167 | 178 | 171 | 173 | 180 | 180 | 187 | 193 | 197 |
| St Monica's CiW Primary School | 129 | 138 | 141 | 126 | 138 | 134 | 139 | 138 | 138 | 141 |
| Ysgol Glan Ceubal | 108 | 136 | 135 | 149 | 151 | 153 | 159 | 167 | 168 | 183 |
| Ysgol Gymraeg Melin Gruffydd | 413 | 415 | 396 | 402 | 403 | 408 | 408 | 408 | 402 | 415 |
| Ysgol Mynydd Bychan | 204 | 198 | 202 | 203 | 203 | 203 | 208 | 206 | 204 | 204 |
| Ysgol Y Wern | 522 | 546 | 570 | 575 | 591 | 593 | 592 | 581 | 573 | 566 |

If the proposed changes were to be implemented, it is expected that most of the additional pupils enrolled at Ysgol Mynydd Bychan would be from within its catchment area, and some may be from other areas of the city. This takes account of recent school preference patterns, and the overall fall in the population entering primary education in the next three intakes.

An increase in the take up of places at Ysgol Mynydd Bychan by children from within its catchment area would mean that the take up of places in local English-medium schools by children from the area would reduce. An increase in the take up of places at Ysgol Mynydd Bychan from outside its catchment area would mean that the take up of places in other Welsh-medium schools in other parts of the city would likely reduce.

Table 23: Number of pupils enrolled at local schools if the proposals **were not implemented**.

The figures for 2017/18 to 2021/22 are the recent number of pupils enrolled. The figures for 2022/23 to 2026/27 are the forecast number of pupils enrolled.

| Table 23: Number of pupils enrolled at local schools if the proposals were not implemented | | | | | | | | | | |
|---|---|-----------------------|-----------------------|-----------------------|-----------------------|---|-----------------------|-----------------------|-----------------------|-----------------------|
| School | Recent number of pupils enrolled | | | | | Forecast number of pupils enrolled | | | | |
| | 2017/ 2018 | 2018/ 2019 | 2019/ 2020 | 2020/ 2021 | 2021/ 2022 | 2022/ 2023 | 2023/ 2024 | 2024/ 2025 | 2025/ 2026 | 2026/ 2027 |
| Albany Primary School | 371 | 365 | 393 | 383 | 378 | 373 | 366 | 359 | 354 | 348 |
| Allensbank Primary School | 202 | 204 | 185 | 190 | 193 | 195 | 205 | 204 | 198 | 190 |
| Gladstone Primary School | 178 | 167 | 178 | 171 | 173 | 180 | 180 | 187 | 192 | 190 |
| New Primary School | N/a | N/a | N/a | N/a | N/a | N/a | N/a | N/a | 398 | 380 |
| St Monica's CiW Primary School | 129 | 138 | 141 | 126 | 138 | 134 | 139 | 138 | 138 | 141 |
| Ysgol Glan Ceubal | 108 | 136 | 135 | 149 | 151 | 153 | 159 | 167 | 166 | 179 |
| Ysgol Gymraeg Melin Gruffydd | 413 | 415 | 396 | 402 | 403 | 408 | 408 | 408 | 402 | 415 |
| Ysgol Mynydd Bychan | 204 | 198 | 202 | 203 | 203 | 203 | 208 | 206 | 218 | 225 |
| Ysgol Y Wern | 522 | 546 | 570 | 575 | 591 | 593 | 592 | 581 | 573 | 566 |

Alternatives considered

The existing number of English-medium primary school places at Albany, Allensbank and Gladstone Primary Schools is sufficient to accommodate the projected demand for places at schools and retains a high margin of surplus to respond to any potential fluctuation or sustained increase in demand, and the high levels of pupil mobility in the area.

There is insufficient space on the existing Ysgol Mynydd Bychan site to allow for expansion on-site.

The Council has investigated alternative site options that may be available and centrally located within the existing Ysgol Mynydd Bychan catchment area. There is no suitable vacant site available in the area local to the school that could accommodate an enlarged Ysgol Mynydd Bychan.

The Council has discounted making no changes to English-medium provision as this would not realise the education or financial benefits to the relevant schools, and it would not allow for a local solution to oversubscription of Ysgol Mynydd Bychan.

The Council has in the past made use of the surplus places at Allensbank Primary School for accommodating other Education support officers. The Council has considered whether part of the Allensbank site could again be utilised for other services or provision. However, this would not realise the educational or financial benefits to Allensbank Primary School nor to the other schools. It would not greatly offset the costs of maintaining the existing English-medium provision. It would not allow for a local solution to oversubscription of Ysgol Mynydd Bychan. This option has therefore been discounted.

The Council has considered locating Welsh-medium provision on the shared Gladstone Primary School and St. Monica's Church in Wales Primary School site and English-medium provision on the Allensbank site but has discounted this option.

The current take-up of places at English-medium provision is widely spread throughout the area, and there are many English-medium schools in the wider areas. The current take-up of places at Welsh-medium provision is concentrated in the northern part of its catchment area, in close proximity to the existing Ysgol Mynydd Bychan site and the Allensbank site. At present, there are significant travel distances to alternative Welsh-medium provision. There is also a high demand for Welsh-medium places at neighbouring schools to the north of its catchment area, with few surplus places overall.

Locating English-medium provision on the shared Gladstone Primary School and St. Monica's Church in Wales Primary School site, and Welsh-medium provision on the Allensbank site provides a more appropriate distribution of places for current and future intakes.

The Council has discounted reorganisation of provision on the Albany Primary School site. Albany Primary School is a greater distance from the home addresses of pupils currently enrolled at Ysgol Mynydd Bychan, has a relatively low level of surplus overall of c10% and each of its classrooms is utilised as a class base.

Overall, there is sufficient capacity within existing schools serving the area to enable the reorganisation of existing provision. Reorganisation of provision provides an appropriate means of balancing the availability and take up of both English-medium and Welsh-medium provision in the area and represents a more effective and efficient use of resources. Reorganisation would also retain flexibility in the Schools Estate to respond to any future population changes affecting the area.

Admission arrangements

Consultation on the 2025/2026 admission arrangements for community schools would take place in Autumn 2023 – Spring 2024 in accordance with the requirements of the Admissions Code. This consultation would include any proposed changes to Published Admission Numbers.

The proposed changes in the Published Admission Numbers include:

- An increase in the Published Admission Number at Ysgol Mynydd Bychan, from 30 places to 60 places (options 1, 2 and 3).
- The potential establishment of a new two form entry English-medium primary school with a Published Admission Number of 60 places (option 1 only).
- The potential reduction in the Published Admission Number at Allensbank Primary School, from 30 places to 27 places (option 3 only).

Should the Council proceed to implement Option 1, all pupils in Reception to Year 5 on roll at Allensbank Primary School and Gladstone Primary School at the end of the 2024/2025 school year would be offered the opportunity to transfer to the roll of the proposed new school.

A review of community primary school catchment areas would be undertaken to consider the balance the number of places available and the projected demand for places and progress against the WESP targets. Any proposed changes to school catchment areas would be subject to consultation at the appropriate time.

Any change to the St Monica's Church in Wales Primary School admission arrangements arising out of the establishment of nursery provision at the school would be subject to consultation by the Governing Body of the school at the appropriate time.

Detailed information about admission arrangements is in the Council's Admission to Schools booklet published on the [Council's website](#).

Learner Travel Arrangements

There are no plans to change the Council's policy on the transport of children to and from school. Any pupils affected by this proposal would be offered the same support with transport as is provided throughout Cardiff and in line with the same criteria that apply across Cardiff.

The Council's transport policy for school children can be viewed on the Council's website (www.cardiff.gov.uk).

In the event of the proposal being progressed to implementation, all pupils' entitlement to free home to school transport would be re-assessed from the new location.

The Council provides free home to school transport for pupils with statements for Additional Learning Needs (ALN) or Individual Development Plans (IDPs) dependent on the shortest available walking distance from their home address to the school/base location nearest appropriate gate.

The distance criteria used are that pupils of primary school age need to live two or more miles, and secondary aged pupils three or more miles, from the school via the shortest available walking distance to the nearest appropriate gate.

For pupils with Additional Learning Needs the Council also takes into consideration their:

- cognitive age, and then applies the relevant distance criteria for the cognitive age
- any disabilities that will impact their ability to walk these distances.

All pupils distance assessments for entitlement to free home to school transport are undertaken on the basis that the child is accompanied on the route to school as appropriate. It is the responsibility of parents or guardians of a child to arrange for their child to be accompanied along the walking route to school.

Funding of proposed changes

Capital funding

The Welsh Government invited all Local Authorities in Wales to submit bids for grant funding to support capital investments that facilitate growth in Welsh-medium education and use of the Welsh language.

The Council was successful in securing funds from the Welsh-medium Capital Grant Scheme including £1.86m to reorganise primary school provision in central Cardiff and expand Welsh medium places by one form of entry (210 places). The purpose of the Welsh Medium Capital Grant is to support capital investments that facilitate growth in Welsh-medium education and use of the Welsh language.

The grant funding programme is aimed specifically at capital projects that will demonstrably contribute to meeting the Welsh Government's aim of reaching one million Welsh speakers by 2050. The funding allocated to the Council is ring-fenced to support expansion in Welsh-medium education provision and would allow for investment in school buildings to support increased intakes.

The Council has recently allocated capital funding to address priority condition and suitability works at the shared Gladstone and St Monica's site, and at the Allensbank site. Further capital funding would be identified from the Council's financial resources to support the relocation of English-medium provision. This would improve the suitability of facilities to accommodate the changes to provision and benefit learners. The required funding would depend on the option taken forward.

Revenue funding

The funding formula for schools is driven by per pupil funding and a number of lump sum allocations per school. Funding per pupil is generally higher in smaller schools due to the costs of the headteacher and other fixed costs absorbed over a low number of pupils.

A reduction in the number of schools in Cardiff would therefore allow for a reduction in the number of lump sum allocations to schools. These funds would be redistributed to schools through the funding formula.

Larger schools are also generally able to secure better value for money through economies of scale in a number of areas including managing contracts and potentially in their staffing structure.

The amount of funding per pupil at Allensbank Primary School, Gladstone Primary School, St Monica's Church in Wales Primary School and Ysgol Mynydd Bychan is higher than the average funding per pupil across Cardiff's 98 primary schools of £3,891 in 2022/2023.

Table 24 below sets out the budgetary position for schools where changes are proposed.

| School | Balance brought forward April 2022 | Governor Approved Budget 2022/23 | Budget projection Jan 2023 |
|--------------------------------|------------------------------------|----------------------------------|----------------------------|
| Allensbank Primary School | £23,757 | -£132,301 | -£93,000 |
| Gladstone Primary School | £84,651 | 0 | -£60,000 |
| St Monica's CiW Primary School | £41,804 | 0 | -£2,000 |
| Ysgol Mynydd Bychan | £170,220 | £86,286 | £100,000 |

Governing Bodies are currently setting budgets for 2023/24.

The Welsh Government Capital Grant scheme does not provide any additional financial resources for the restructuring of staffing structures of schools affected by reorganisation of provision. These costs would be met by the Council.

The expansion of Ysgol Mynydd Bychan would incur additional staffing and leadership costs for the school which would be met from the school's budget. The budget would increase in line with the greater number of pupils on roll.

The proposed expansion of Ysgol Mynydd Bychan may result in the school operating some smaller classes, or some mixed-age classes, as the school grows. School admissions preference data indicates that the number of pupils admitted to the school would increase, but the school would have a high level of surplus places for a number of years. Although the school's budget would increase as the number of pupils on roll increases, the cost per pupil would likely be higher for an extended period while the school grows. As growth, and investment, would be phased, the financial impact of changes would be minimised wherever possible.

Should a proposal to transfer Allensbank Primary School to the shared Gladstone Primary School/St. Monica's Church in Wales Primary School site, or to the Ysgol Mynydd Bychan site proceed, the Speech and Language Intervention Class may be relocated. The delegated budget for this class would be transferred to another host school.

It should be noted that the number of pupils enrolling at Allensbank Primary School and Gladstone Primary School has fallen in recent years, coinciding with reducing intakes to primary education city-wide which are projected to continue until at least 2025/2026. In this context, the number of staff employed by schools may reduce, whether or not any proposals to reorganise provision are progressed.

Financial information specific to each option can be seen at the options sections of this document.

Impact of the proposals on the Welsh Language

There would be a positive impact on the Welsh Language with an increase in the number of Welsh-medium primary school places available at primary age.

The Council's Welsh in Education Strategic Plan (WESP) sets out a series of ambitious commitments to build on the progress achieved to date. The WESP commits the Council to ensuring city wide capacity in the primary Welsh-medium sector at 10% over and above the projected intake at Reception to support growth and allow for in-year admissions and flexibility for transition. This includes the delivery of new Welsh-medium capacity at primary level by 2025/2026.

The proposals seek to align with the Bilingual Cardiff Strategy and strongly support the Welsh Government's strategy for the Welsh language by contributing to meeting the targets set out in the Cymraeg 2050 strategy.

The proposals directly respond to the following WESP Outcomes:

- Outcome 1 - More nursery children/ three-year-olds receive their education through the medium of Welsh
- Outcome 2 - More reception class children/ five-year-olds receive their education through the medium of Welsh

Schools serve a diverse range of communities and largely reflect their local population, however it is acknowledged that the Welsh-medium schools are at present less diverse than English-medium schools. Targets and workstreams within Cardiff's adopted WESP seek to address this.

The proposals would have a greater impact on the population closer to the schools than on the city as a whole.

The Council is committed to the development of Welsh-medium education and as part of the 10-year Welsh in Education Strategic Plan which was adopted in September 2022, consideration is being given to ways in which Welsh-medium education can be expanded to increase the number of children from all backgrounds attending.

The Council works closely and constructively with partners on its Welsh Education Forum, which includes representatives of nursery, primary, secondary and further education, childcare, RhAG and the Welsh Government. The Forum actively informs the planning of Welsh-medium places, to continue to drive the Council's plan to sustainably increase the number of learners within Welsh-medium schools and those learning Welsh in English-medium schools.

The Council, and its partners on the Welsh Education Forum, are committed to driving the increase in number of pupils educated through the medium of Welsh, to meet the targets within Cardiff's WESP, and to meet the targets set out in the Welsh Government's Cymraeg 2050 strategy.

The Council monitors birth rates, the yield from proposed housing and the patterns of take-up in Welsh medium provision at primary and secondary age, with a view to bringing forward appropriate plans to meet any increased demand.

The Council must ensure that the expansion of school provision is brought forward in a strategic and timely manner, which does not compromise existing provision. Significantly or rapidly expanding Welsh-medium primary school provision would, inevitably, have an impact on the take-up of places in other schools, and in turn on the ability of schools to balance budgets and to attract or retain staff.

The Council's aspirations for increasing the number of Welsh speakers, and the Welsh Government's Cymraeg 2050, propose a significant change. Cymraeg 2050 sets national targets of educating 40% of learners in Welsh-medium schools, and a further 30% of learners being educated in English-medium schools being fluent in Welsh. At present, c17% of Cardiff children entering primary education are educated in Welsh-medium schools or classes.

This proposal seeks to increase the number of Welsh-medium primary school places available in the area and seeks to implement the change in such a way that the potential for negative impact on existing schools is limited.

There is a risk that provision of additional Welsh-medium primary school places may inhibit the growth at other local schools; however, Cardiff's WESP sets out a commitment to develop and implement targeted promotion in conjunction with Bilingual Cardiff to increase take up of Welsh-medium places in areas with low demand.

Equalities

The Equality Act 2010 places a duty on public services to advance equality of opportunity between persons who share a relevant protected characteristic and persons who do not share it.

An Equality Impact Assessment (EIA) is a process that looks at a policy, project or scheme to make sure it does not discriminate against anyone based on the protected characteristics set out in the Equality Act 2010 (age, disability, gender reassignment, marriage & civil partnership, pregnancy & maternity, race, religion/belief, sex, sexual orientation).

An initial Equality Impact Assessment has been carried out and is available to view at www.cardiff.gov.uk/CathaysGabalfaPrimarySchools

This assessment will be reviewed and updated after the consultation and at key points if the proposals were to proceed.

Community Impact

A Community Impact Assessment assesses the potential impact that proposed changes could have on the local community. When considering the potential for impact on the wider community as a result of a proposal, the following are taken into account: Public Open Space, parkland, the current use of school facilities by the community, noise and traffic congestion. Officers will work with schools and any community group to make sure that the proposal avoids negative impacts if possible.

The schools that might be affected by the proposals are existing schools. They offer a range of afterschool activities, and some have community organisations offering services from the school. It is not thought that there would be a negative impact on any of these activities as a result of these proposals.

An initial Community Impact Assessment has been carried out and is available to view at www.cardiff.gov.uk/CathaysGabalfaPrimarySchools

This assessment will be reviewed and updated after the consultation and at key points if the proposals were to proceed.

Potential Disruption to Pupils

The Council has significant experience in the successful delivery of building and refurbishment projects on the sites of occupied schools as a result of progressing a large and growing school organisation programme and a large-scale asset renewal programme.

In the event of the proposed changes being progressed a project lead officer would be assigned to work with the relevant governing bodies to oversee the development of a detailed investment programme. This programme would include the planned works, transition arrangements, pupil and staff health and wellbeing and the timescales of these workstreams.

Wherever possible, building and refurbishment works that may be more disruptive would be undertaken during the school holidays to minimise any potential impact on teaching and learning.

The proposed expansion of Ysgol Mynydd Bychan on the Allensbank site would be phased from September 2025. This would mean that the school does not need to use all of its accommodation in 2025/2026 and could allow for parts of the two buildings to be closed to staff whilst works are undertaken.

As part of the consultation the views of pupils at the schools will be sought and any issues raised will inform any future work plans.

Next steps, how to make your views known and feedback form

What happens next?

Key Dates

The Council will collect and summarise the feedback from this consultation. Council officers will then report this to the Council's Cabinet and to St Monica's Church in Wales Primary School Governing Body. The consultation reports will be available for anyone to view/download on the Council / school website. You can also get a copy by using the contact details in this document.

If any of the proposed options are agreed to proceed following consultation, there are a number of further stages that the Council and St Monica's Church in Wales Primary School Governing Body would have to go through before a final decision is made.

These stages are set out in Table 25 below:

Table 25: Further stages

(This timetable may be subject to change)

| Statutory Process | Timescale |
|---|----------------------------|
| Consultation Period | 03 May 2023 – 30 June 2023 |
| Consultation report considered by the Council Cabinet / Governing Body and published on the Council / school website | July/September 2023 |
| Expected date for start of Objection Period, when statutory notice has been issued (when formal objections can be made) | September/October 2023 |
| Expected date for end of Objection Period | October/November 2023 |
| Final decision (determination) by the Council's Cabinet / Governing Body | December 2023/January 2024 |
| Objection report published on the Council website and notification of Cabinet's decision | December 2023/January 2024 |

Consultation period

The consultation period for these proposals starts on 03 May 2023 and ends on 30 June 2023.

See pages 10/83 for further details of how to respond and make your views known.

The Council and the Governing Body of St Monica's Church in Wales Primary School will publish a consultation report on their websites. The report must be published at least two weeks prior to the publication of a statutory notice.

You can also ask for a hard copy of the report.

The report will go over the issues raised during the consultation period and give the Council's response, and the response of St Monica's Church in Wales Primary School Governing Body to these issues. The report will also contain Estyn's view of the proposals.

The Council's Cabinet will consider the consultation report and decide whether to go ahead with the proposed changes to Allensbank Primary School, Gladstone Primary School and Ysgol Mynydd Bychan.

The Governing Body of St Monica's Church in Wales Primary School will consider the consultation report and decide whether to go ahead with the proposed changes to their school.

If the Cabinet decides to continue with the changes to Allensbank Primary School, Gladstone Primary School and Ysgol Mynydd Bychan, the Council must publish a document called a 'statutory notice'. This is an official statement saying that the changes are proposed to go ahead.

If the Governing Body of St Monica's Church in Wales Primary School decide to continue, they must also publish a 'statutory notice'.

Statutory Notice

A statutory notice is the formal publication of a finalised proposal. The approval to publish a statutory notice must be given by the Council's Cabinet / Governing Body. This would only be considered after the Cabinet / Governing Body have received a report on all the consultation responses. This is a legal requirement as outlined in the School Organisation Code 2018.

The Council would publish the statutory notice(s) on its website. The Governing Body would publish the notice on the school and Cardiff Council website. Copies of the notices would also be put up at or near the main entrance to the school(s)/site(s) affected by the notice.

Schools that are affected would also be given copies of the notice to give out to pupils, parents, guardians, and staff members (the school may also distribute the notice by email). The notice sets out the details of the proposals and asks anyone who wants to object to do so. Objections must be written. They must be sent to the Council /Governing Body within the dates given on the notice.

Determination of the proposals

Cardiff Council Cabinet would determine the proposals for Allensbank Primary School, Gladstone Primary School and Ysgol Mynydd Bychan. This means they will make a final decision on whether the changes go ahead. The Cabinet may decide to approve or reject the proposal, or they may approve the proposal with some changes (modifications). The Cabinet will take any objections received in the Objection Period into account when making this decision.

If there are no objections to the proposal for St Monica's Church in Wales Primary School, the Governing Body would determine the proposal. The Governing Body may decide to approve, reject, or approve the proposals with modifications.

If there were objections to the proposals for St Monica's Church in Wales Primary School, the proposal would be referred to the Local Authority (Cardiff Council) for determination within 35 days of the end of the objection period. This is a legal requirement as outlined in the School Organisation Code 2018. The Local Authority has 16 weeks from the end of the objection period to determine the proposals.

Decision Notification

After determination of the proposals, all interested parties would be informed of the decision. Decisions will also be published on the Council and school websites.

Your views are important to us

Your views matter and we want you to tell us what you think about the changes we have suggested in this document.

You can do this by:

- attending a public meeting or drop-in session. If you would like to attend an online drop-in session/on-line public meeting, please contact us via e-mail schoolresponses@cardiff.gov.uk confirming which session you would like to attend, and we will provide a link and instructions on how you can access the meeting.
- completing the electronic response form which you can find at www.cardiff.gov.uk/CathaysGabalfaPrimarySchools
- printing and completing the consultation response form, which you can find at www.cardiff.gov.uk/CathaysGabalfaPrimarySchools and returning the form by post to Room 401, County Hall, Cardiff, CF10 4UW
- writing to the School Organisation Planning team by e-mail to schoolresponses@cardiff.gov.uk or by post to Room 401, County Hall, Cardiff, CF10 4UW. This can include requesting an officer call back if you have a specific question that you feel you would like further information about.

Please note that all comments sent in writing or by e-mail must contain the full name and postal address of the person making the comments.

The closing date for responses to this consultation is Friday 30 June 2023.

Unfortunately, we will not be able consider any consultation responses received after this date.